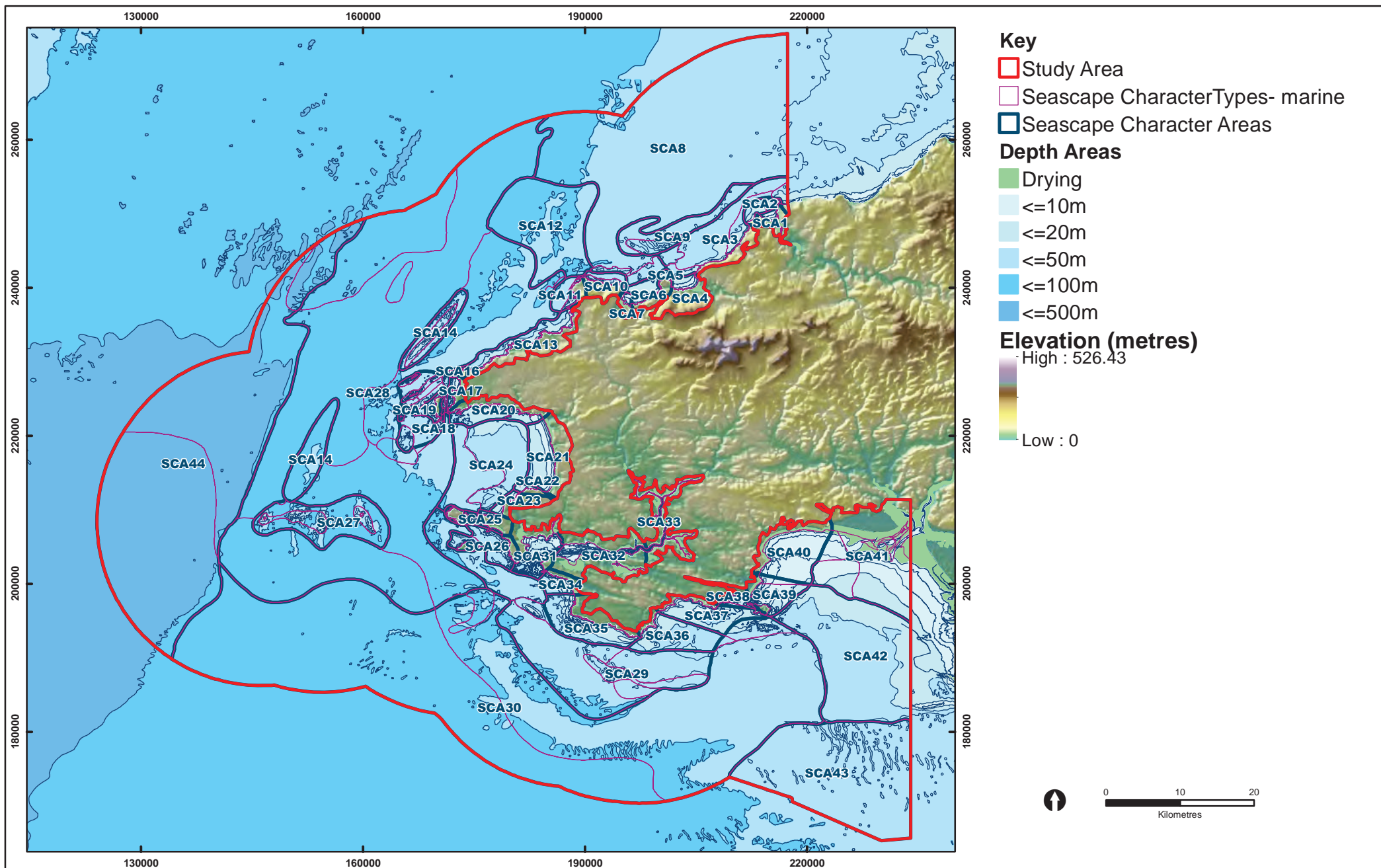


Figure 1: Study Area



Reproduced from Ordnance Survey digital map data © Crown copyright 2013. All rights reserved. Licence number 100019741
 © British Crown and SeaZone Solutions Limited, Data Licence 012003.001. Rights Reserved. NOT TO BE USED FOR NAVIGATION
 Sources: Ordnance Survey, Seazone, Pembrokeshire Coast National Park Authority, CCW, Cadw.

www.whiteconsultants.co.uk
 Tel: 029 2043 7841

Note: SCAs 41, 42, 43 boundaries revised-see Figure 15.

Project: Pembrokeshire Coast National Park
 Seascape Character Assessment
 Client: PCNPA/CCW
 Date: 23/04/2013

Figure 2: Bathymetry & Topography

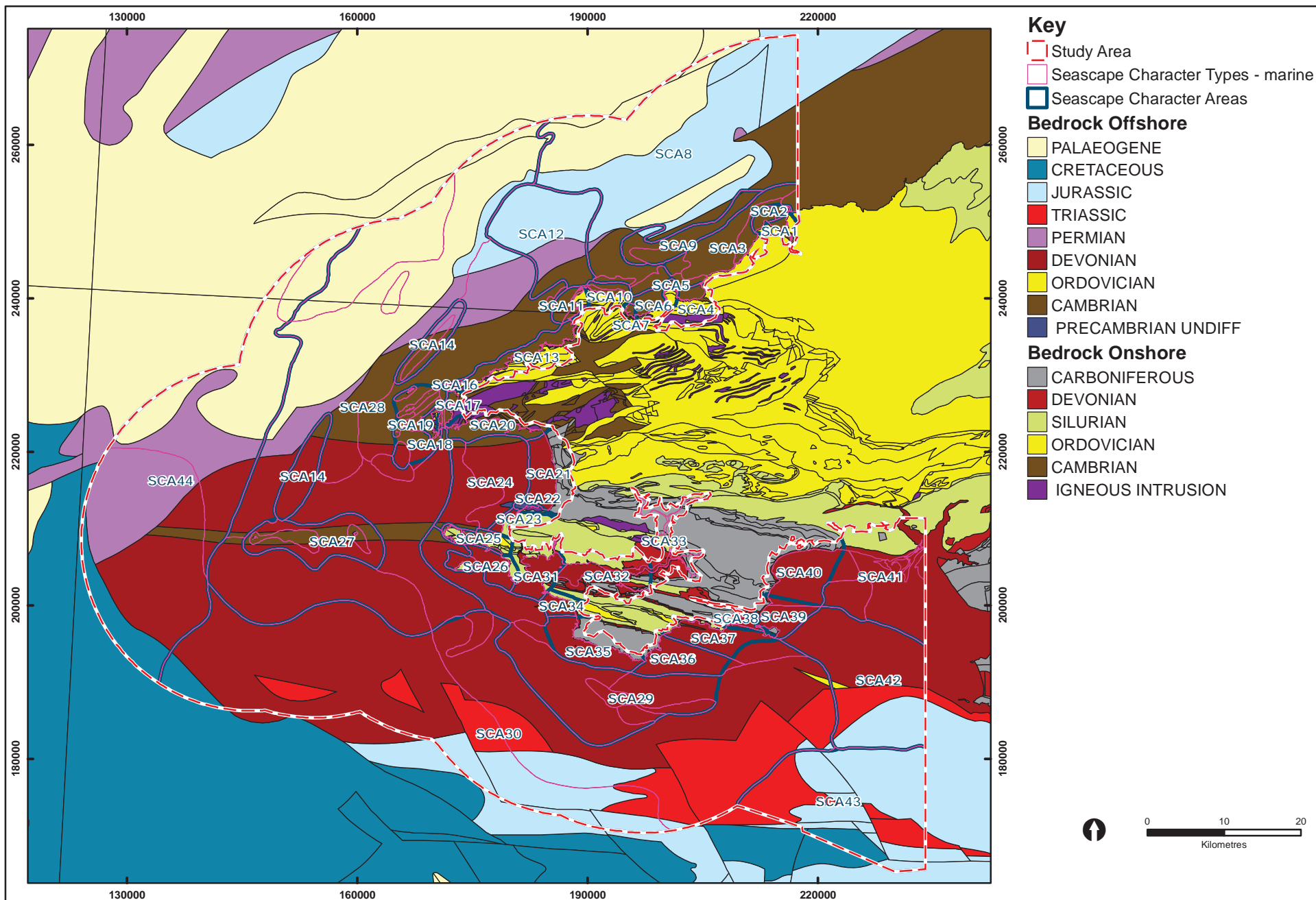
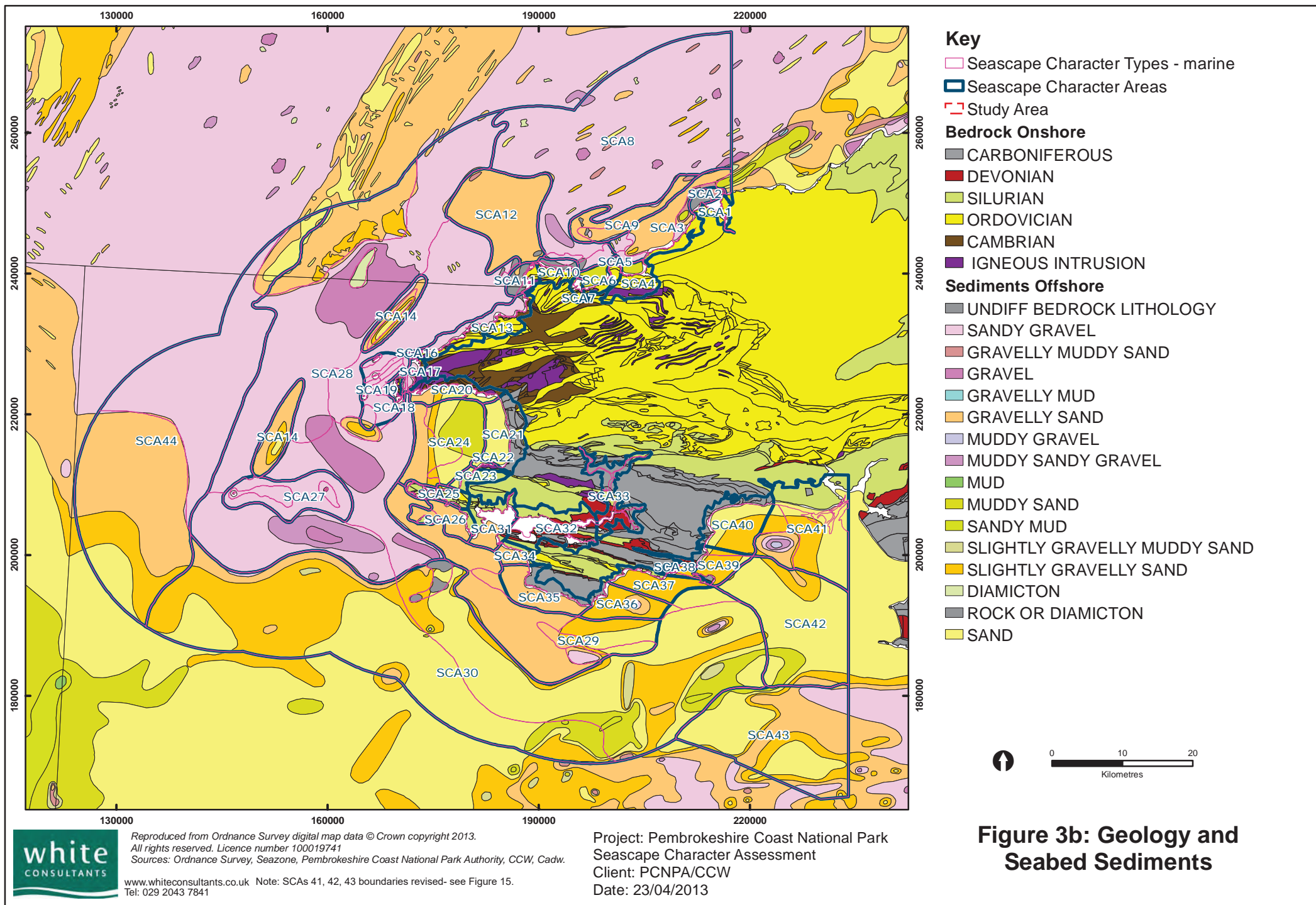
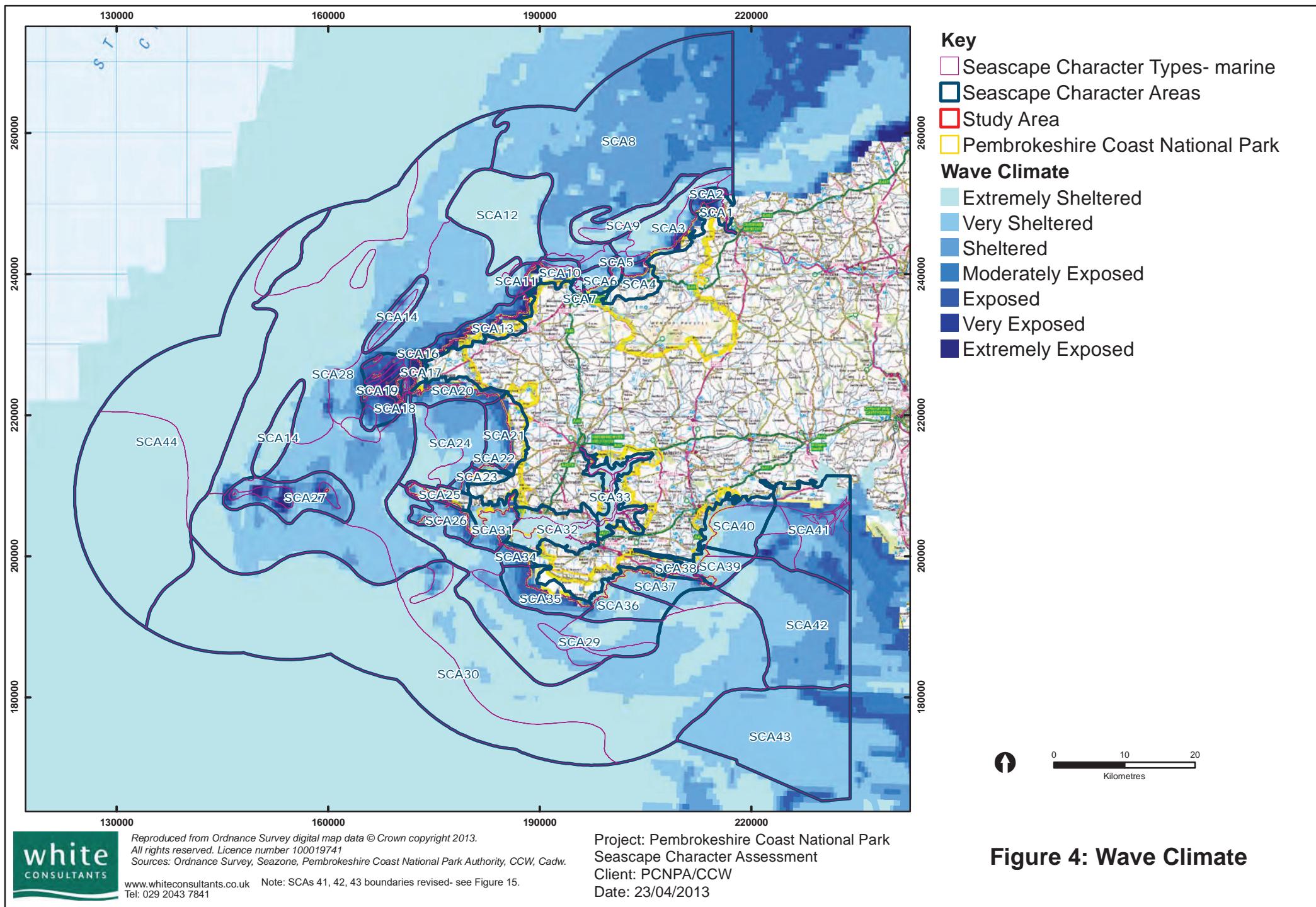


Figure 3a: Geology and Seabed Geology





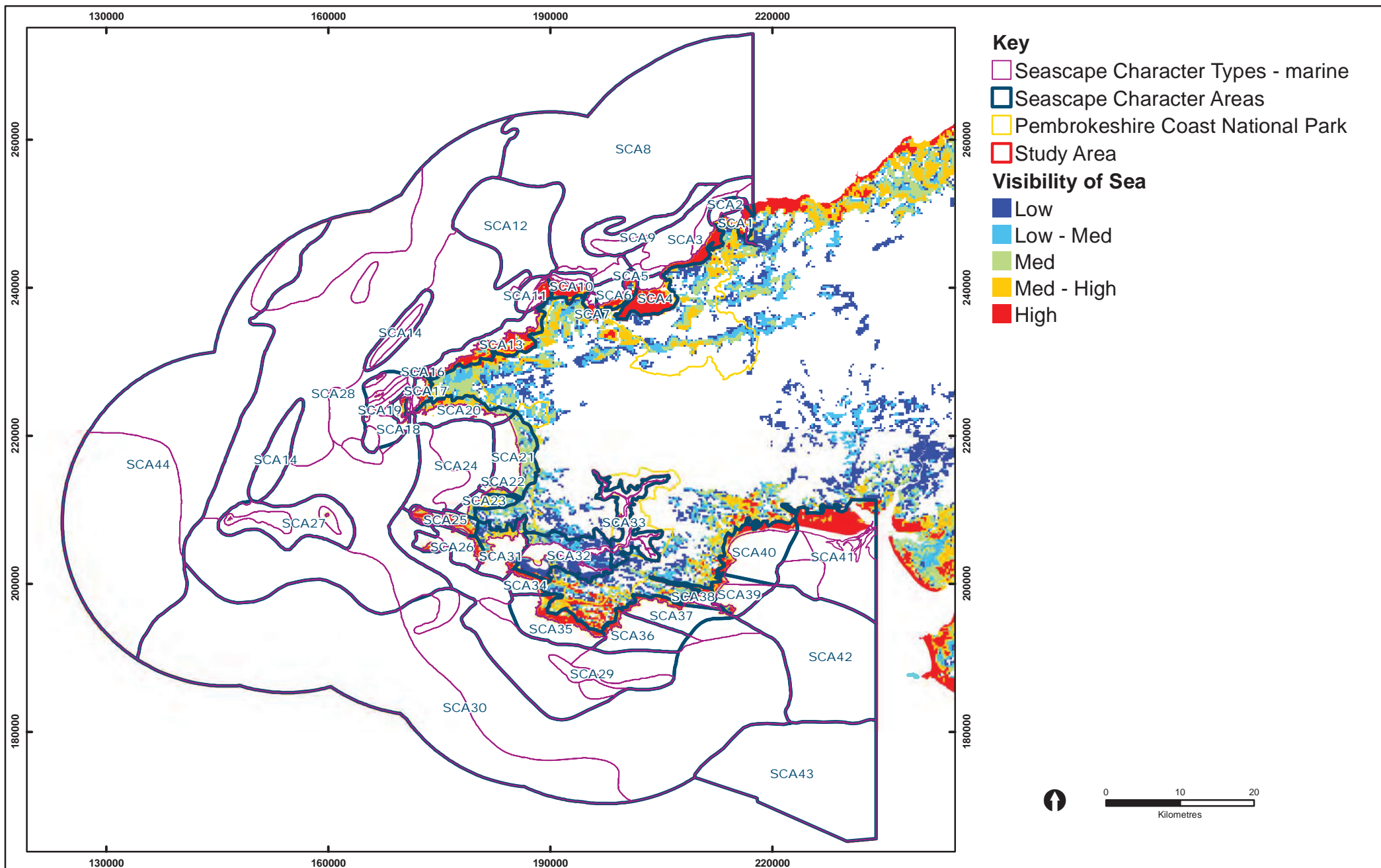
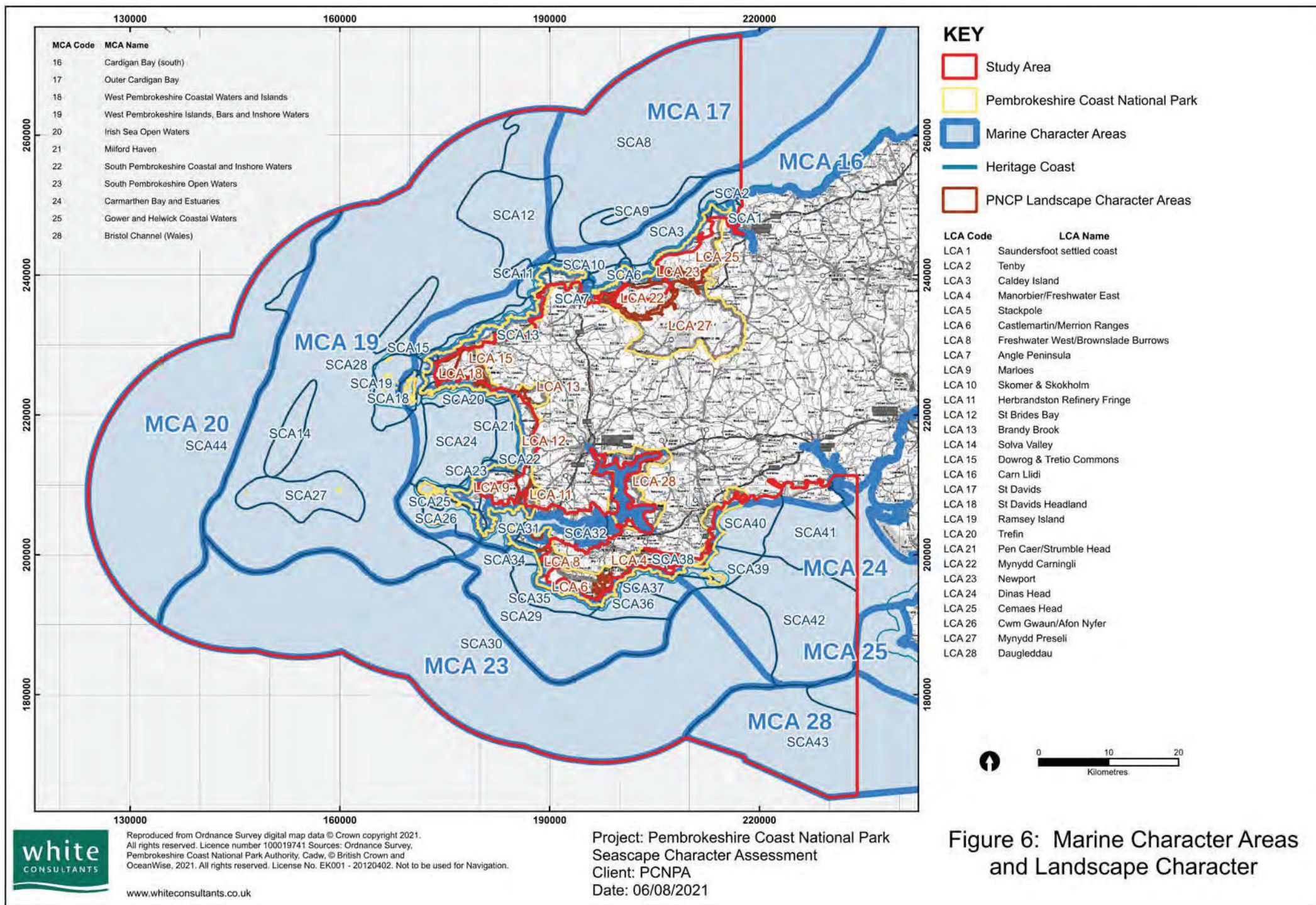


Figure 5: Intervisibility of land with the sea



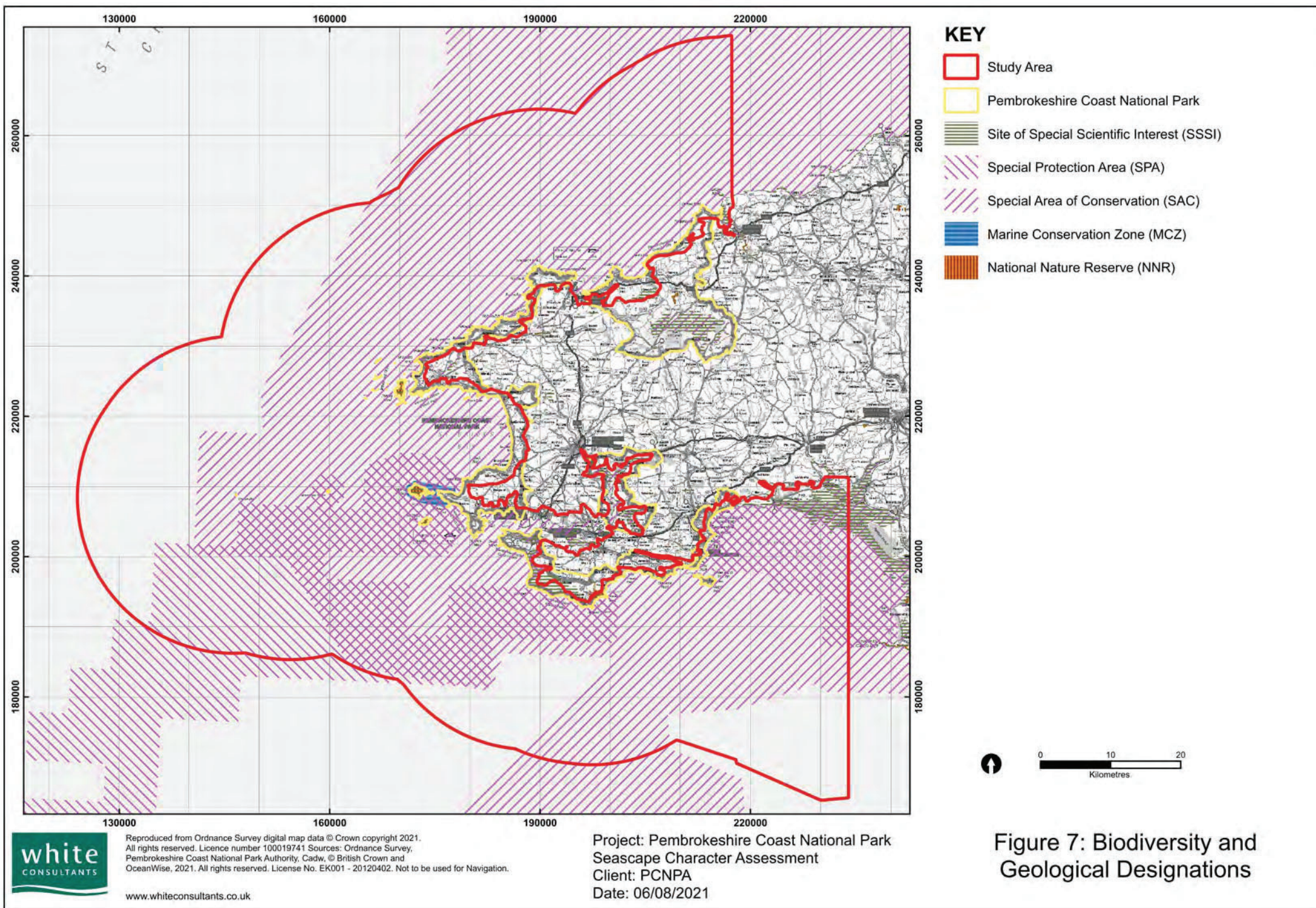


Figure 7: Biodiversity and Geological Designations

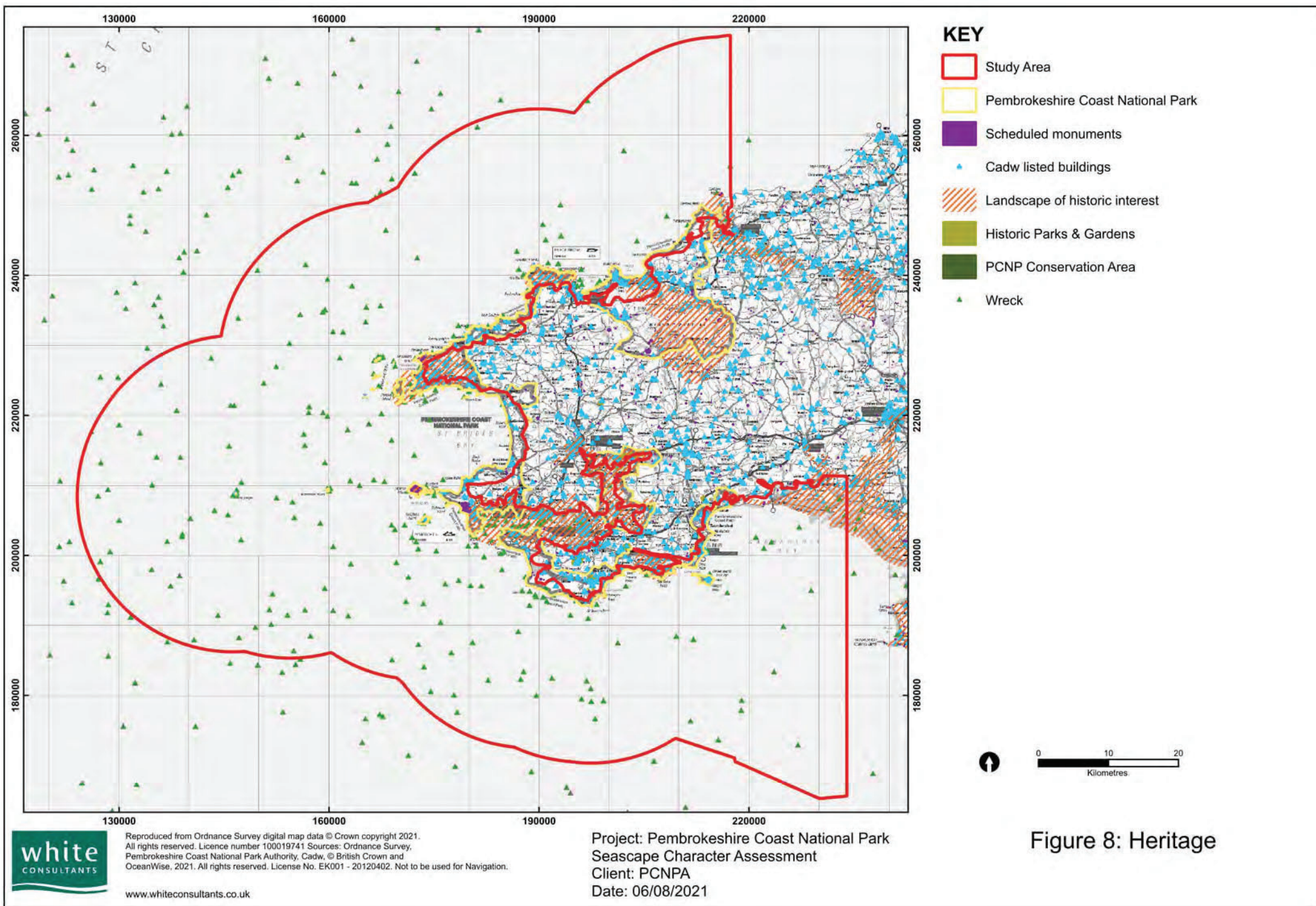


Figure 8: Heritage

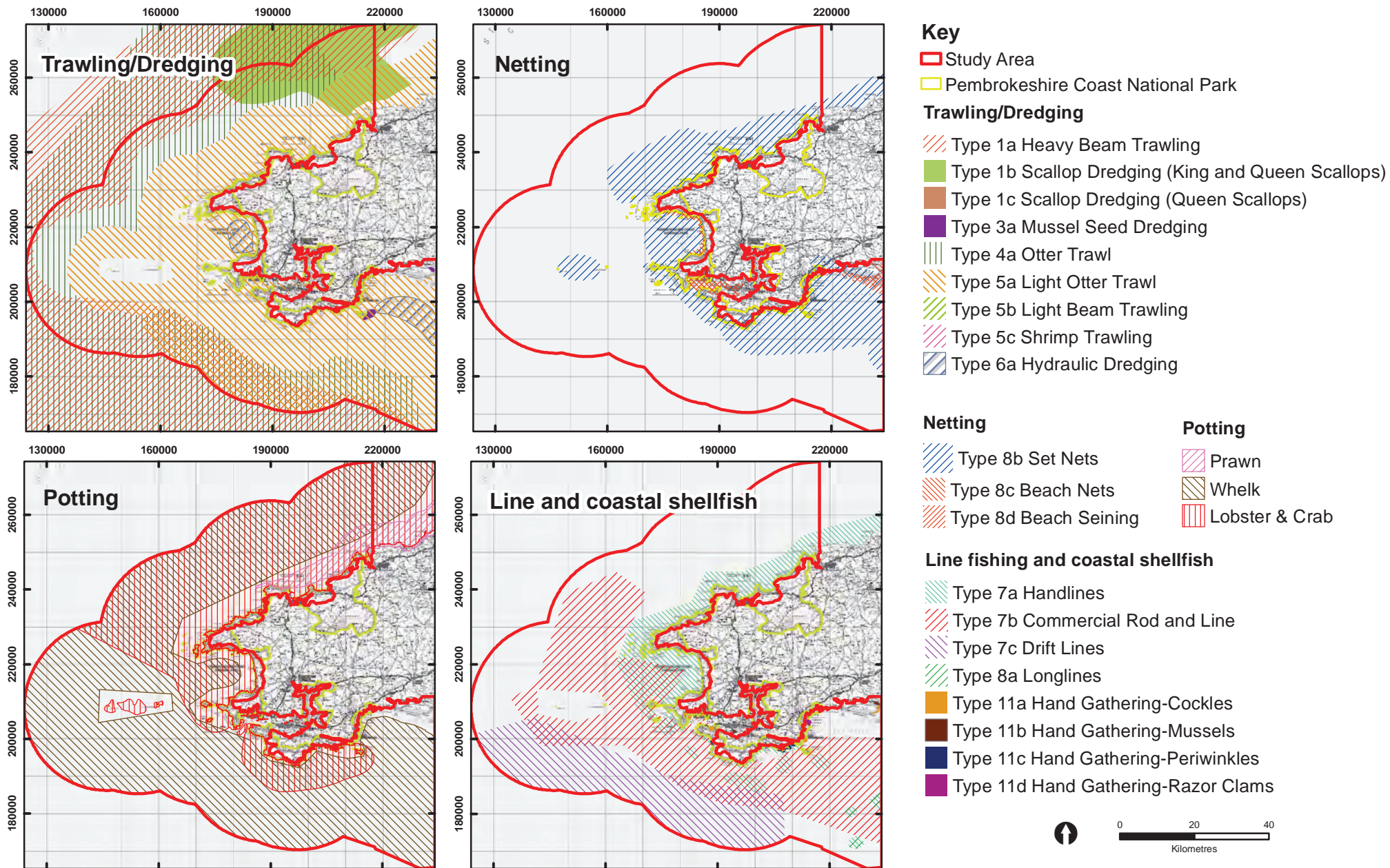
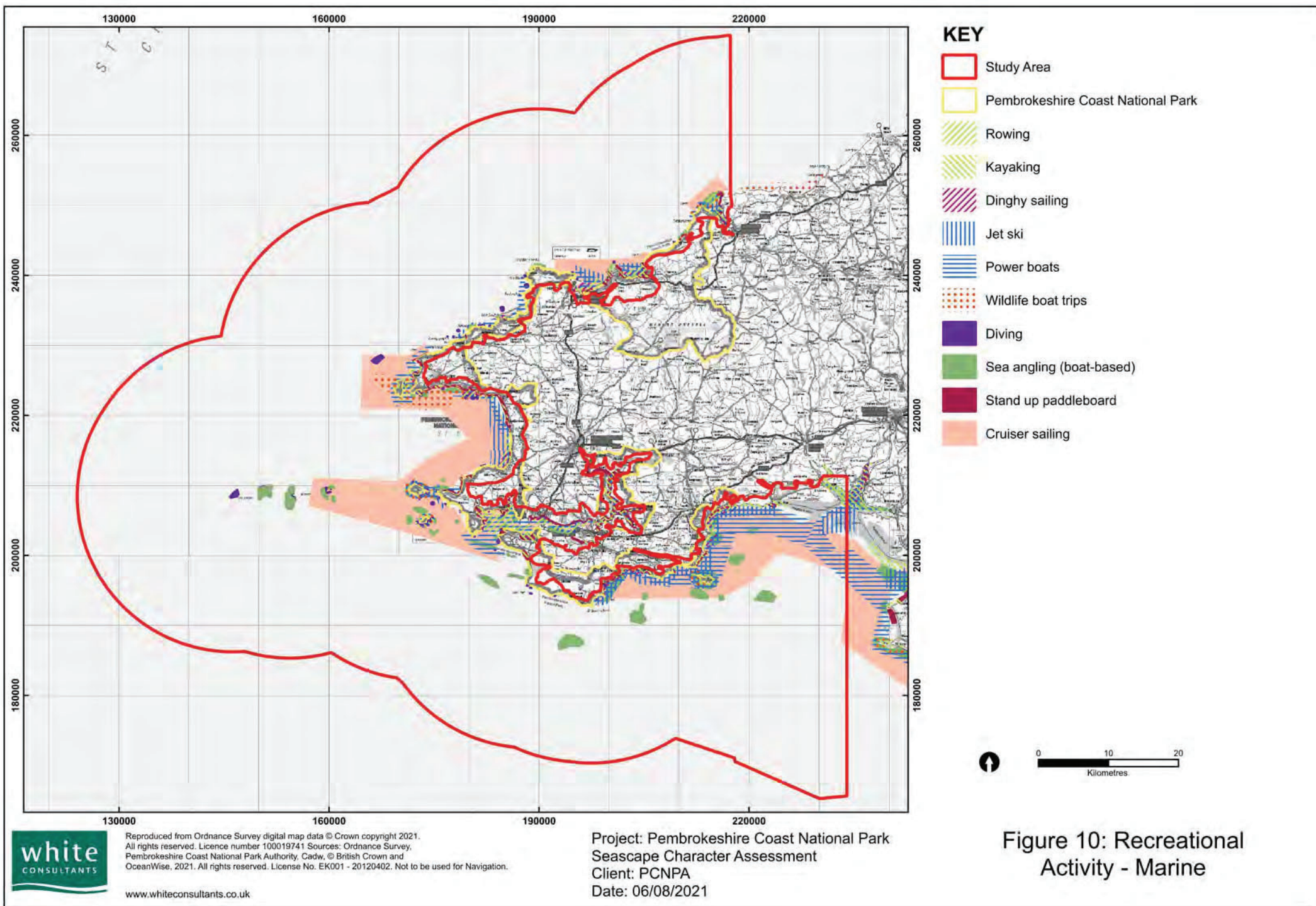
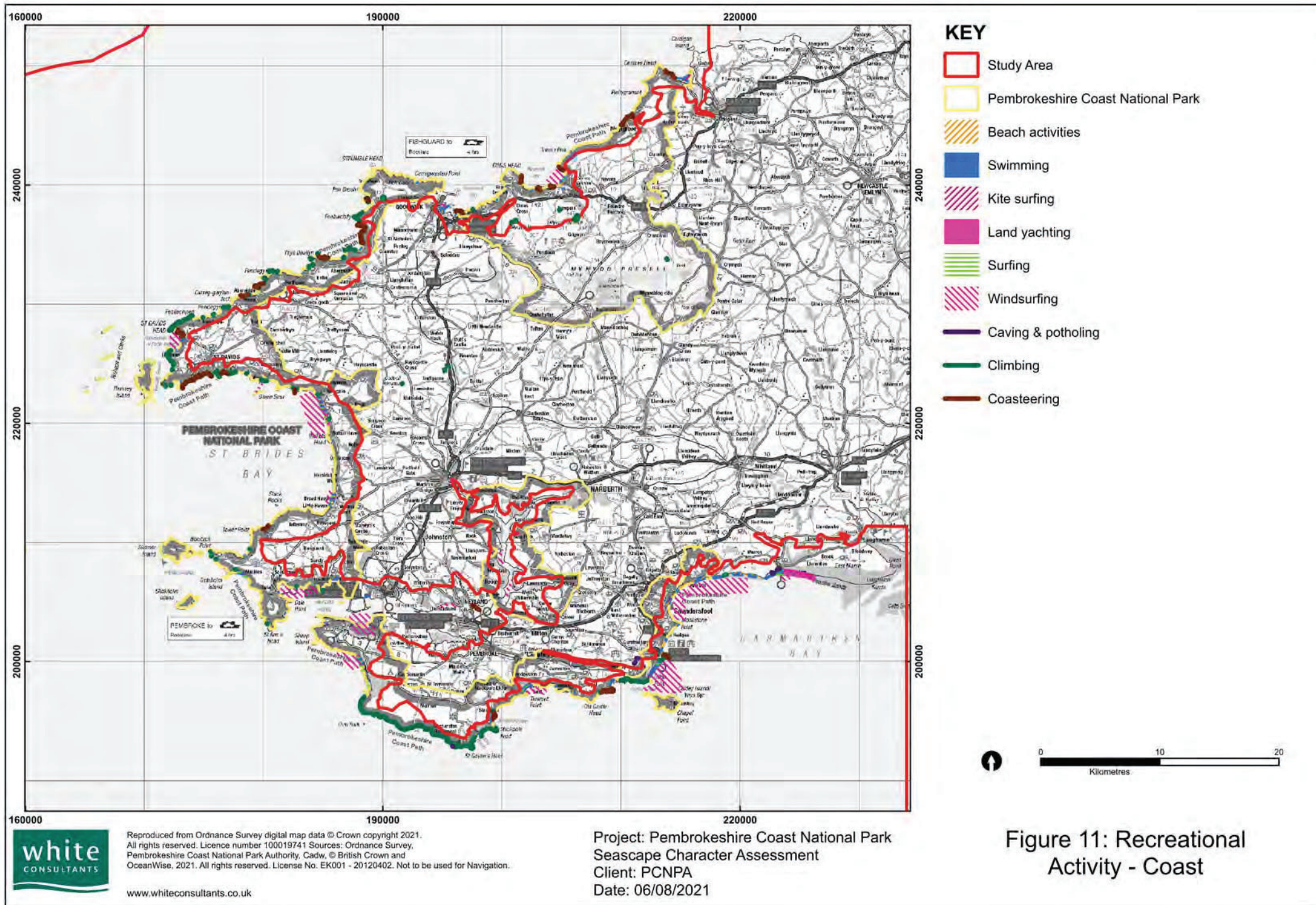
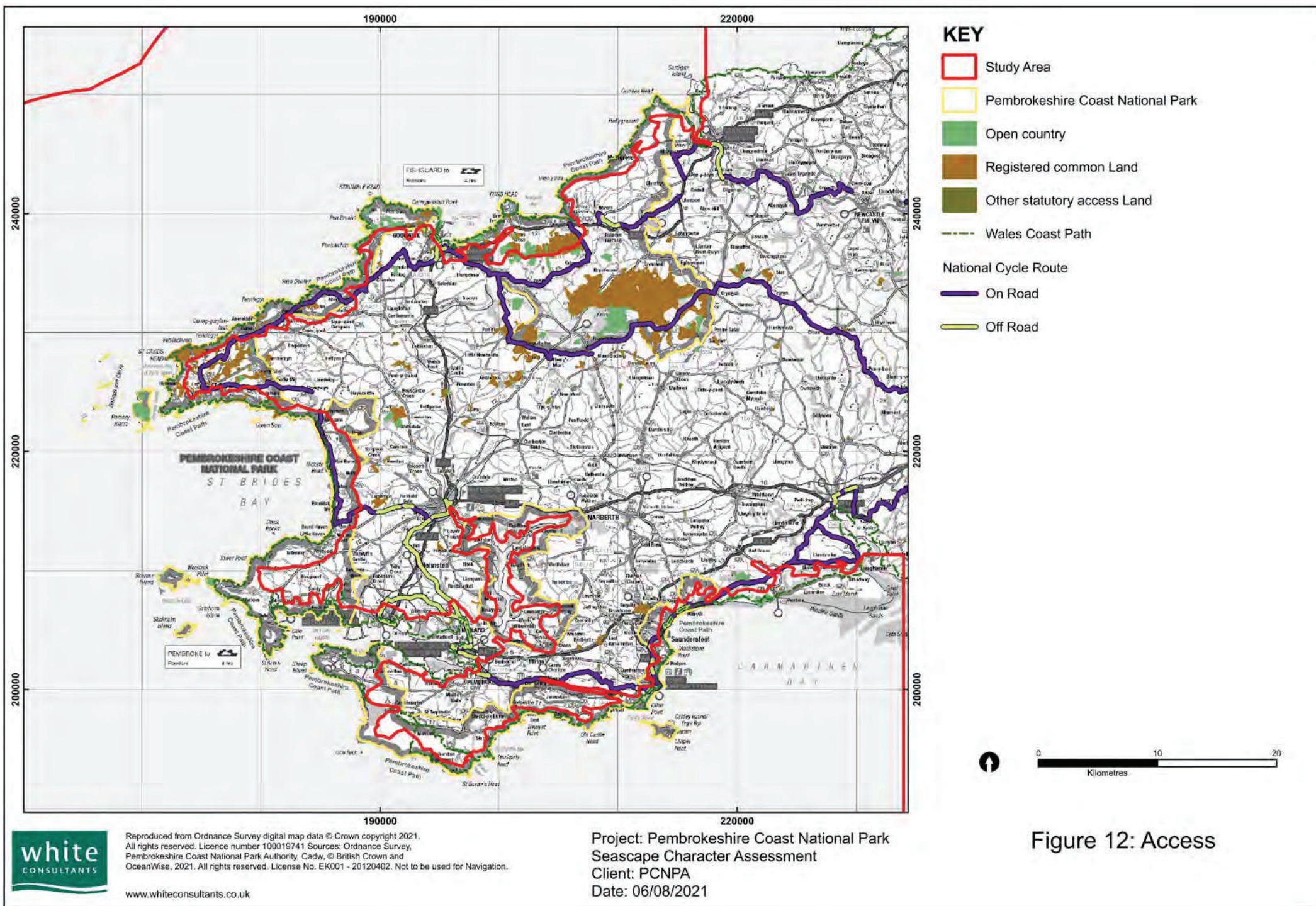


Figure 9: Fishing







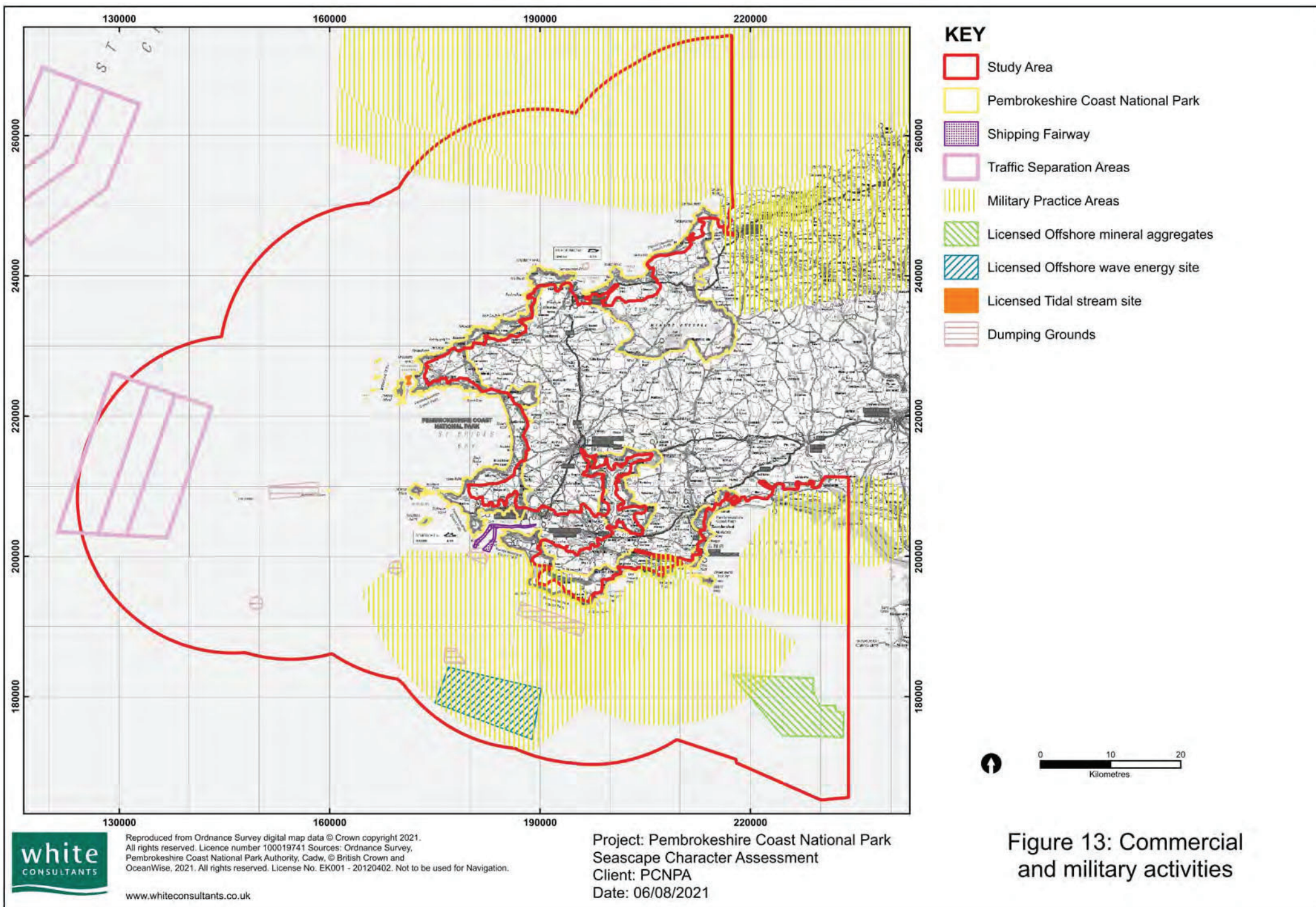
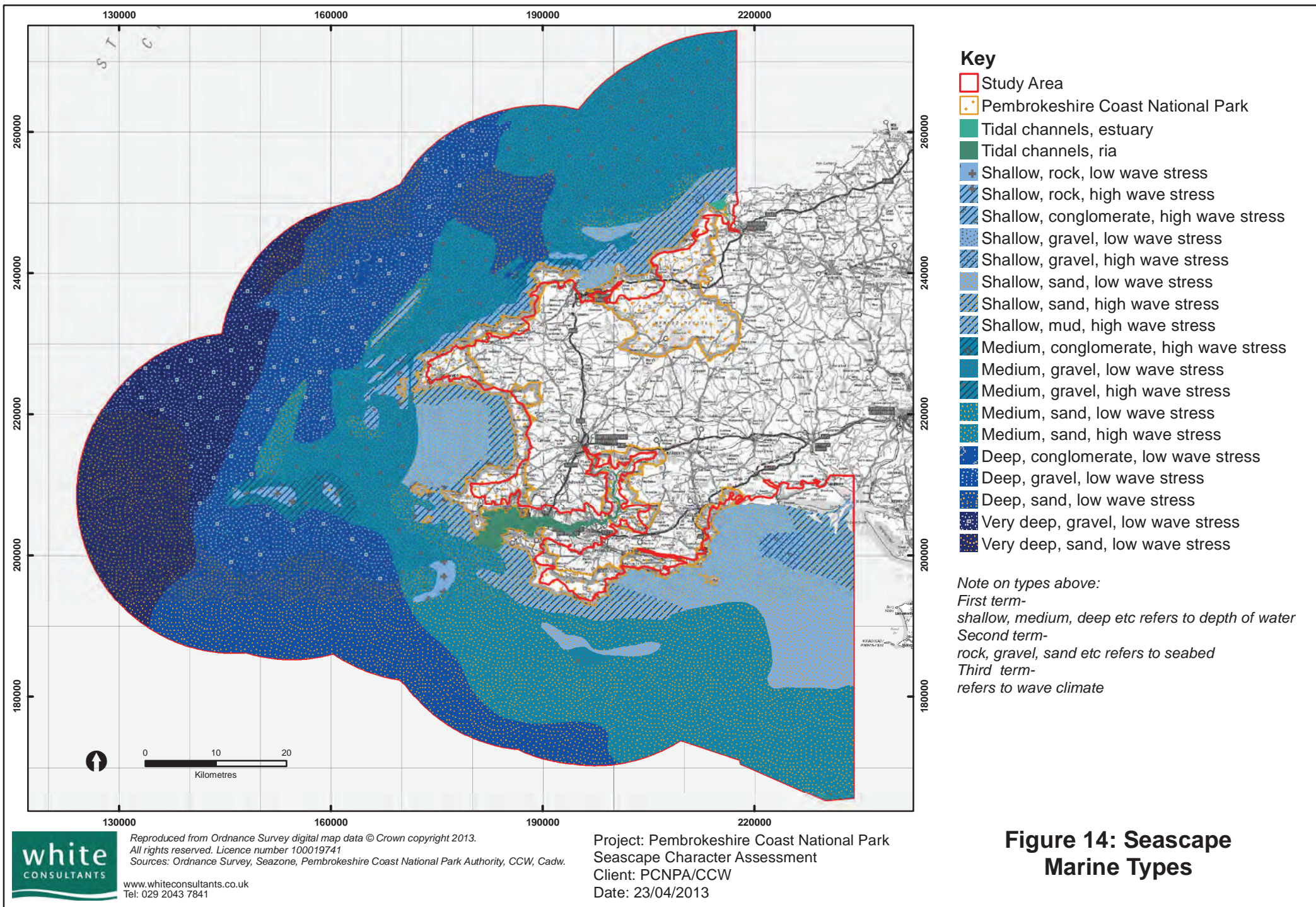
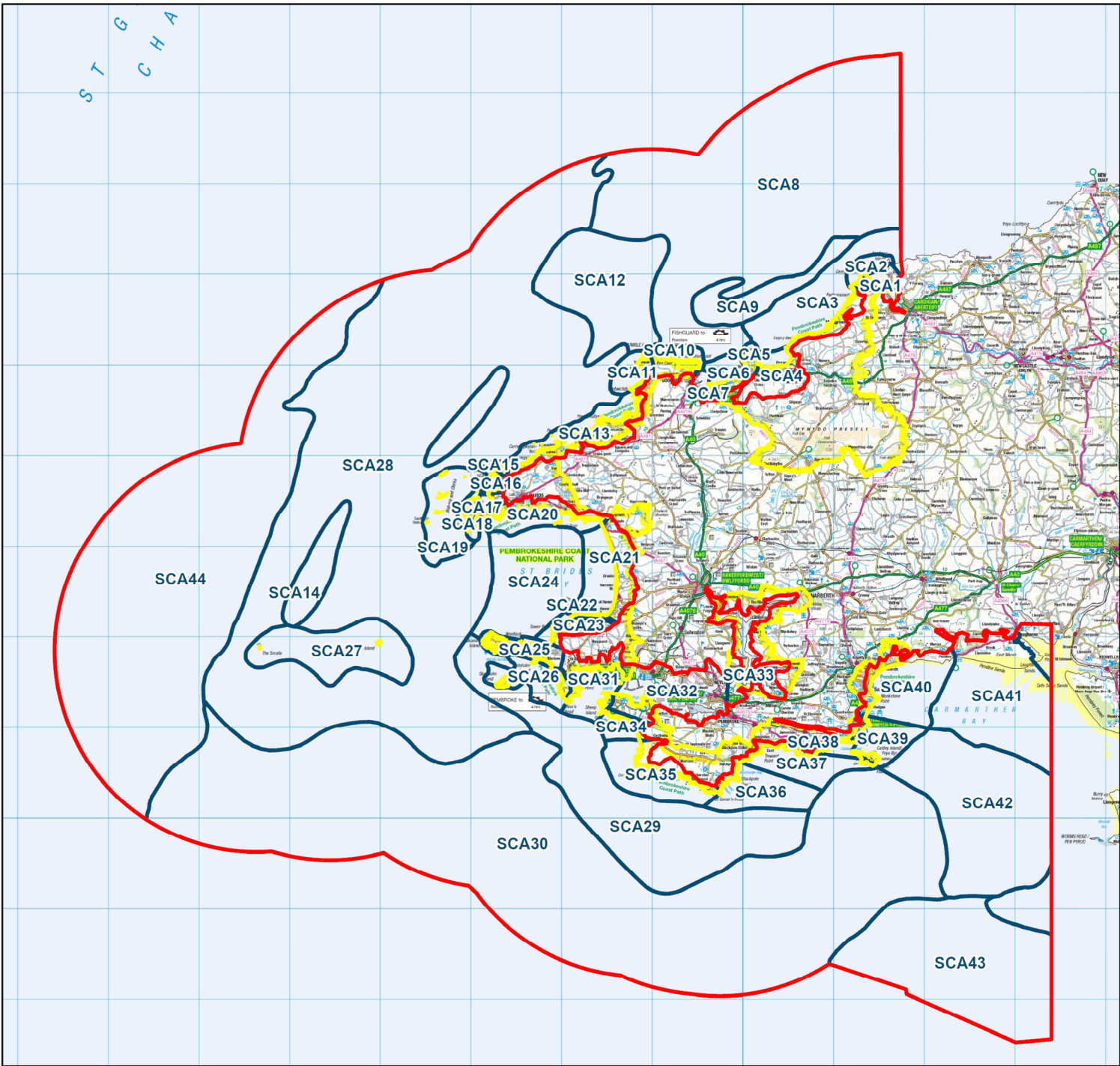


Figure 13: Commercial
and military activities





Key

Study Area

Pembrokeshire Coast National Park

ID SCA Name:
SCA1 Teifi Estuary
SCA2 Cardigan Island and Cemmaes Head
SCA3 Pen y Afr to Pen y Bal
SCA4 Newport Bay
SCA5 Dinas Island
SCA6 Fishguard Bay east
SCA7 Fishguard and Goodwick including Fishguard Harbour and the Quayside at Lower Town
SCA8 North open sea
SCA9 Newport and Fishguard outer sand bar
SCA10 Crincoed Point and Strumble Head
SCA11 Strumble Head to Penbwdy
SCA12 Strumble Head deep water
SCA13 Penbwdy to Penllechwen
SCA14 Western sand and gravel bars
SCA15 St Davids Head
SCA16 Whitesands Bay
SCA17 Ramsey Sound
SCA18 Ramsey Island coastal waters
SCA19 Bishops and Clerks
SCA20 St Brides Bay coastal waters north
SCA21 St Brides Bay coastal waters east
SCA22 St Brides Bay coastal waters south - Borough Head
SCA23 St Brides Bay south coastal waters - The Nab Head
SCA24 St Brides Bay
SCA25 Skomer Island and Marloes Peninsula
SCA26 Skokholm and Gateholm coastal waters
SCA27 Grassholm and the Smalls
SCA28 West open sea
SCA29 Southern inshore waters
SCA30 Southern offshore waters
SCA31 Outer Milford Haven
SCA32 Inner Milford Haven
SCA33 Daulgeddau
SCA34 Freshwater West
SCA35 Castlemartin coastal waters
SCA36 Stackpole coastal waters
SCA37 Freshwater East and Manorbier
SCA38 Lydstep Haven coastal waters
SCA39 Tenby and Caldey Island
SCA40 Carmarthen Bay west
SCA41 Carmarthen Bay north - Pendine Sands
SCA42 Carmarthen Bay
SCA43 Bristol Channel offshore
SCA44 Western offshore - very deep water

0 20
Kilometers

Reproduced from Ordnance Survey digital map data © Crown copyright 2020.
All rights reserved. Licence number 100019741
Sources: Ordnance Survey, Seazone, Pembrokeshire Coast National Park Authority, NRW, Cadw

Figure 15: Seascape Character Areas