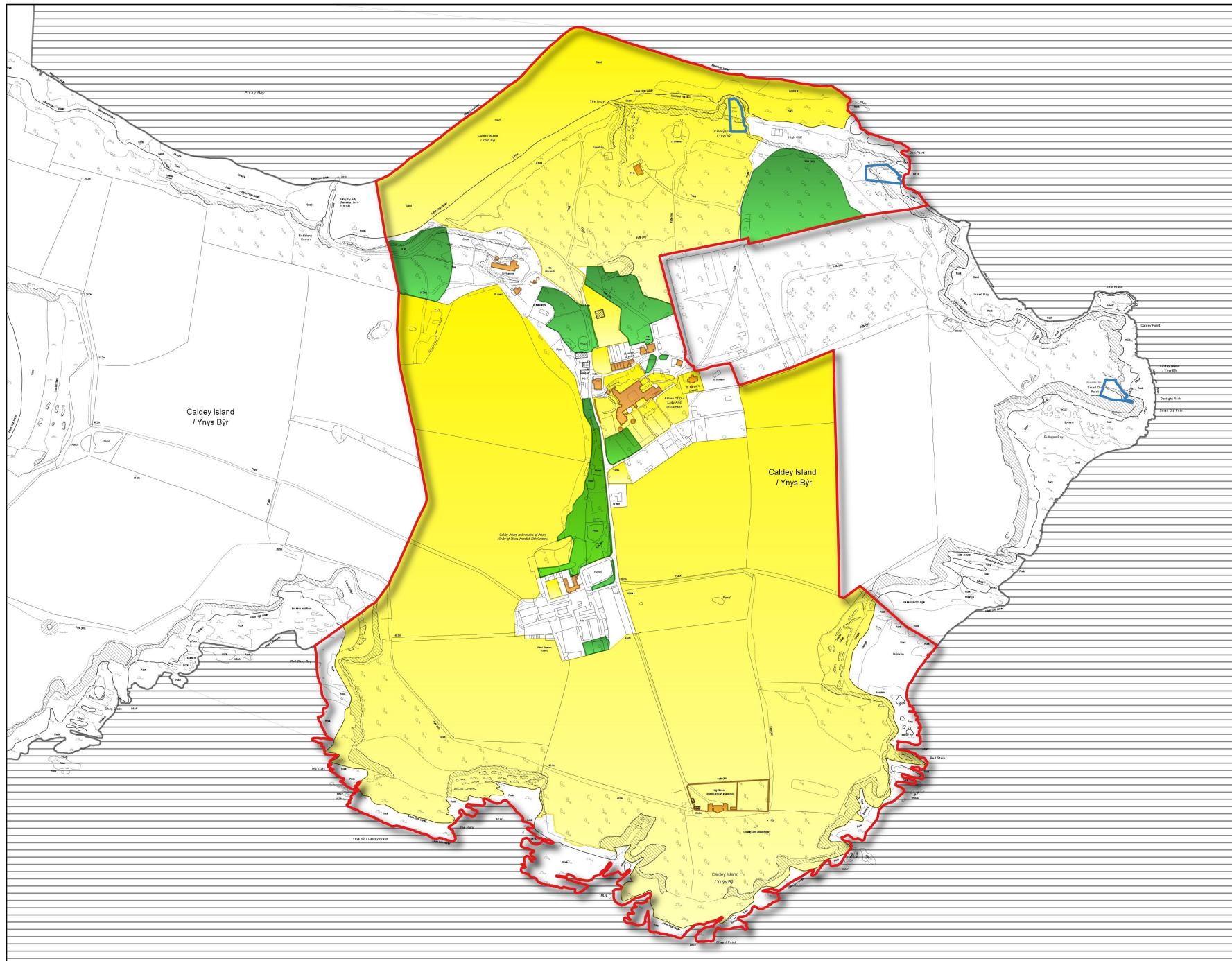


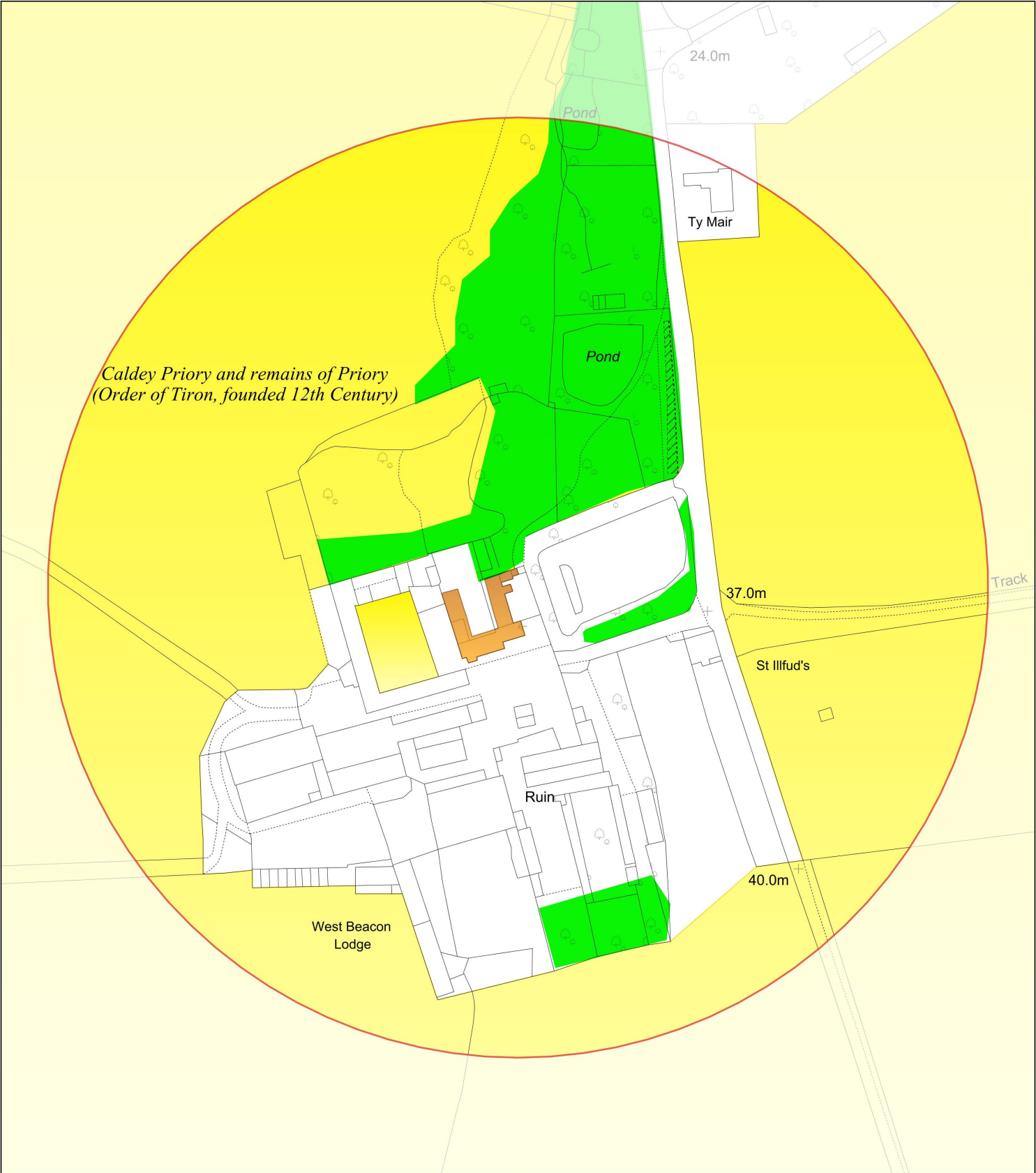
Caldey Island Conservation Area Designated 1997 MAP 1

Key

Conservation Area / Character Areas

-  Listed Buildings
-  Tree Preservation Order/
Trees Important to Setting
-  Scheduled Ancient Monuments
-  Site of Special Scientific Interest
-  Special Area of Conservation
-  Landmark Buildings
-  Positive Buildings
-  Key Curtilages/Frontages
-  Essential Open Areas
-  Opportunity for Improvement of
Forecourt/Curtilage/Shop fronts
-  Opportunity for Enhancement of
Area
-  Opportunity for Public Realm/
Features Enhancement





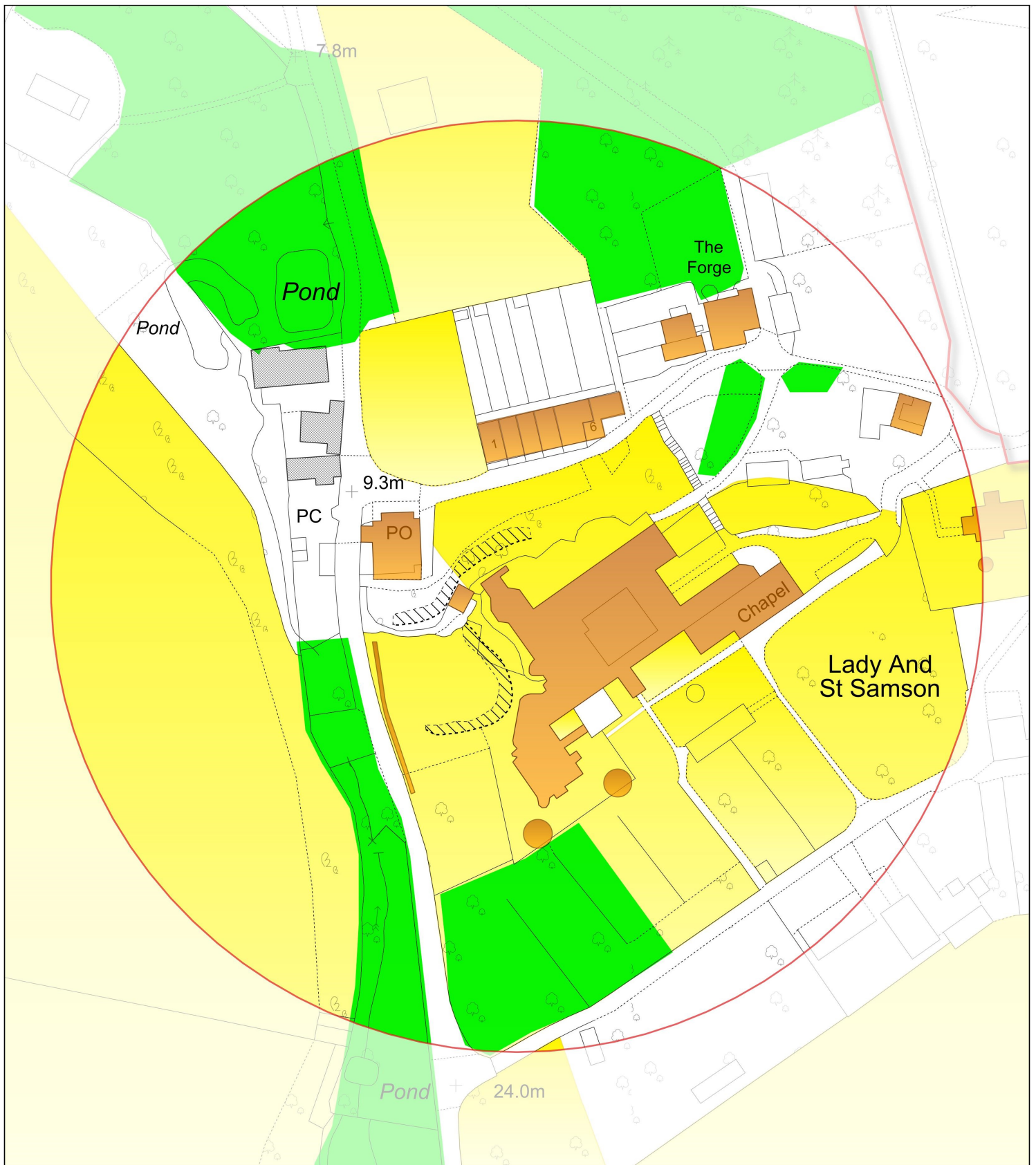
Key

- Conservation Area / Character Areas
- Tree Preservation Order/ Trees important to setting
- Listed Buildings
- Essential Open Areas

Caldey Island
Conservation Area
Designated 1997
MAP 2

Character Area: 1





Key

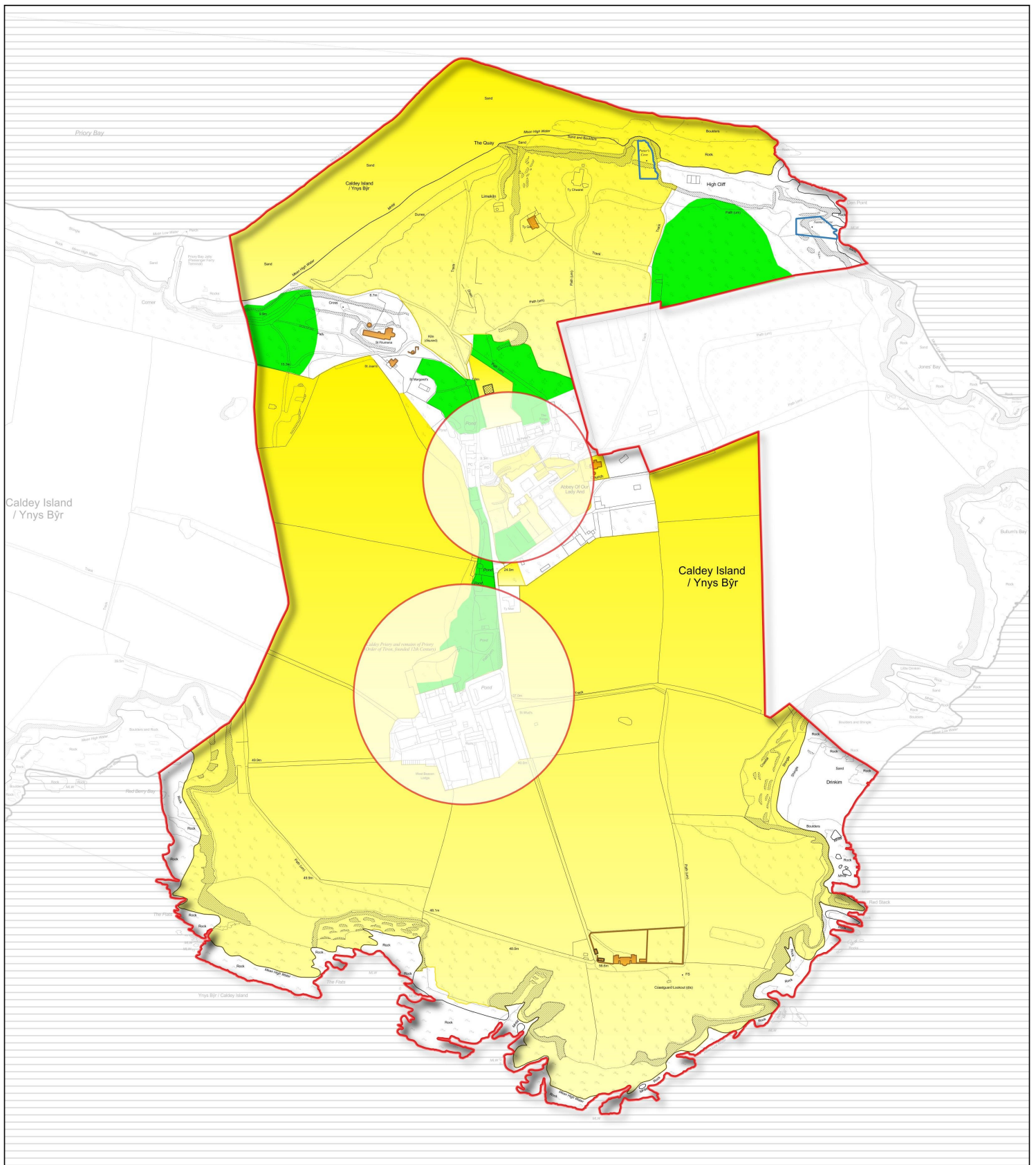
- Conservation Area / Character Areas
- Tree Preservation Order/
Trees important to setting
- Listed Buildings
- Essential Open Areas
- Opportunity for enhancement of building

Caldey Island

Conservation Area
Designated 1997
MAP 3

Character Area: 2





Key

- | | |
|---|---|
| Conservation Area / Character Areas | Scheduled Ancient Monuments |
| Listed Buildings | Special Area of Conservation |
| Tree Preservation Order/
Trees important to setting | Essential Open Areas |
| | Opportunity for enhancement of building |

Caldey Island Conservation Area Designated 1997 MAP 4

Character Area: 3



Caldey Island

Prominent views into Conservation Area



Caldey Island Conservation Area Designated 1997 MAP 5

1. View from Amroth Castle showing east-west aspect of island with Tenby and St Catherine's in the foreground.
2. View from Amroth village showing east-west aspect of island
3. Various views from Tenby (Esplanade Paragon, Castle Hill, Cemetery). Priory Bay prominent with Tŷ Gwyn set among trees and Caldey lighthouse prominent on the horizon.
4. View from Gumfreston Hill showing Priory Bay, Tŷ Gwyn and lighthouse.
5. Fine view of the island from the Ridgeway showing Priory Bay and Sandtop with St Margaret's Island in the foreground. Several buildings visible including Tŷ Gwyn lighthouse and the farm buildings/Old Priory.
6. Fine panoramic view of Caldey and St Margaret's from Lydstep.
7. East-west of island from Penally village.

T NATIONAL PARK/
ARFORDIR PENFRO

Caldey Island

Outlying areas important to the setting and character of the Conservation Area



Caldey Island Conservation Area Designated 1997 MAP 6

- A. Land to the east of Caldey Abbey including former monastic gardens, outlying fields of Jones' Bay and Bullum's Bay - important Mesolithic site.
- B. Land to the west of the village including characteristic stone-walled fields, tracks and Sandtop Bay.
- C. St Margaret's Island including important archeological remains.