

Solva Conservation Area Designated 1997 MAP 1

Key

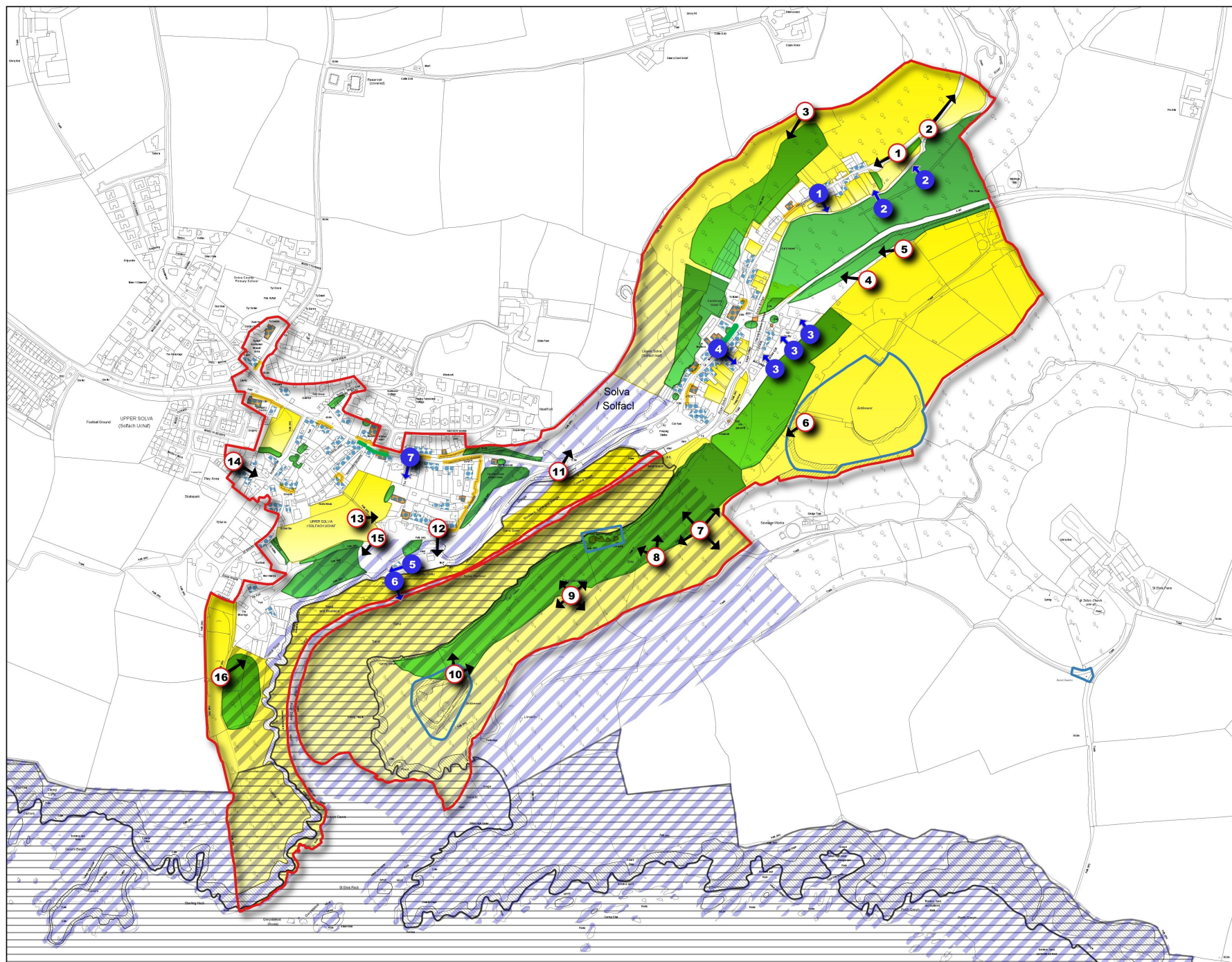
- Conservation Area / Character Areas
- Listed Buildings
- Tree Preservation Order/ Trees important to setting
- Scheduled Ancient Monuments
- Site of Special Scientific Interest
- Special Area of Conservation
- Landmark Buildings
- Positive Buildings
- Key curtilages/frontages
- Essential Open Areas
- Opportunity for improvement of forecourt/curtilage/shop fronts
- Opportunity for enhancement of area
- Opportunity for public realm/features enhancement

Key views

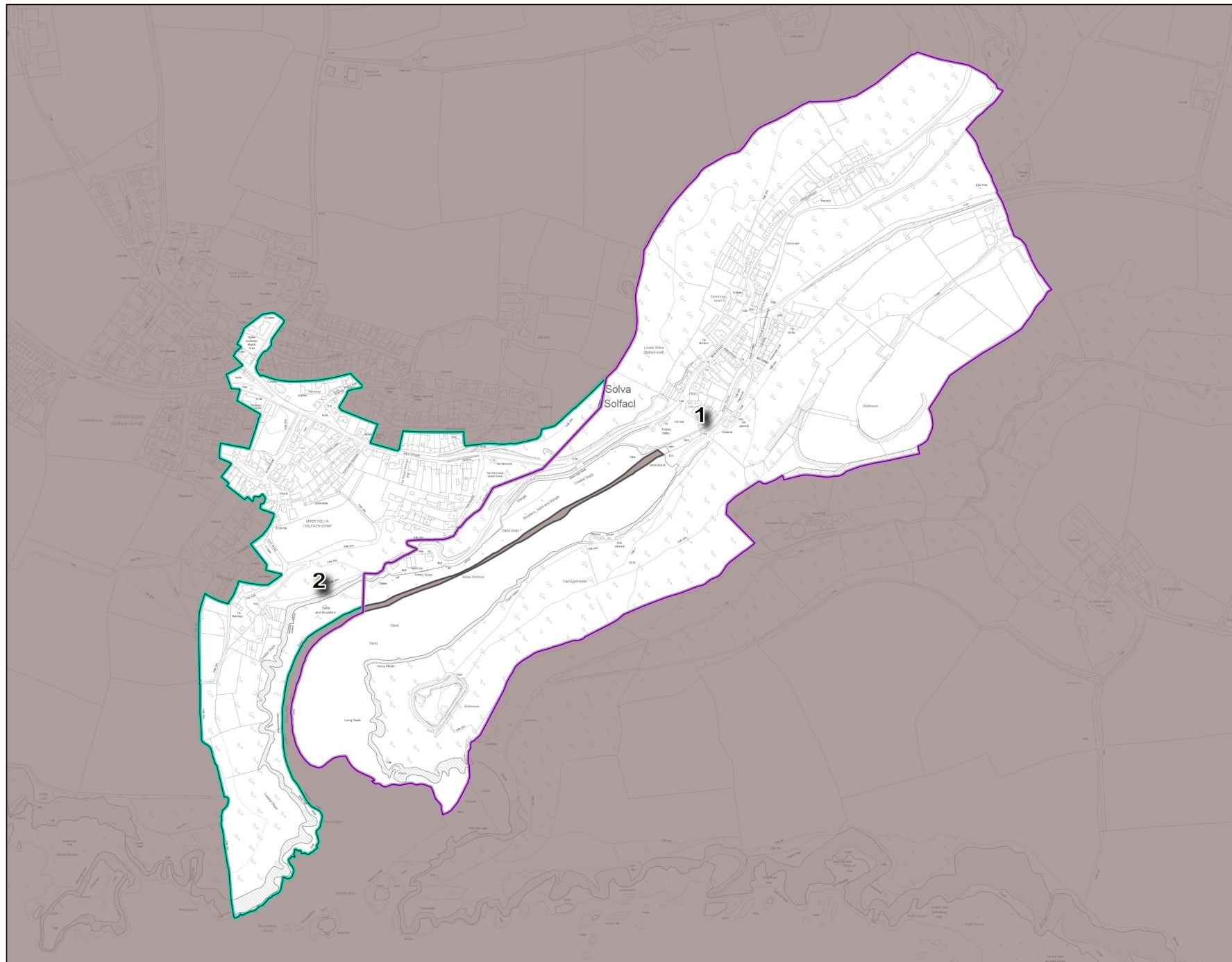
1. View of Prendergast backed by tree-clad slopes
2. View east along Solfach Valley flanked by steep valley sides
3. View from footpath across rooftops to harbour. Fine coastal backdrop
4. View down to Main Street set against steep wooded valley side. Cambrian Inn and former Methodist Chapel prominently visible
5. Fine views over harbour from footpath, across rooftops of Main Street and north towards terraced gardens of Prendergast
6. Fine views over harbour from footpath, across rooftops of Main Street and north towards terraced gardens of Prendergast
7. Panoramic views of harbour, Upper and Lower Solva and St Elvis. Fine distant coastal and landscape views
8. View over whole of harbour and Upper Solva
9. 360° degree views from Carn Lucheden over Upper and Lower Solva, St Elvis and St Brides bay
10. View from the Gribin Fort across harbour to Upper Solva and towards Main Street, Lower Solva
11. View of Lower Solva from Solva Hill
12. Views across estuary mouth towards St Brides Bay from Penyraber
13. Views across Penyraber
14. Views across Penyraber
15. Views towards Fort Cottages & The Fort
16. Fine views over Upper Solva & Solva Harbour within valley setting; distant farmland.

Glances to an object/landmark/point of interest

1. Glimpse of river Solfach from Prendergast
2. Glimpse of Prendergast from footpath
3. Glimpses of Main Street through trees
4. Glimpse down New Street
5. Glimpse of Fort Cottages & The Fort from Trinity Quay
6. Glimpse of sea between headlands from Trinity Quay

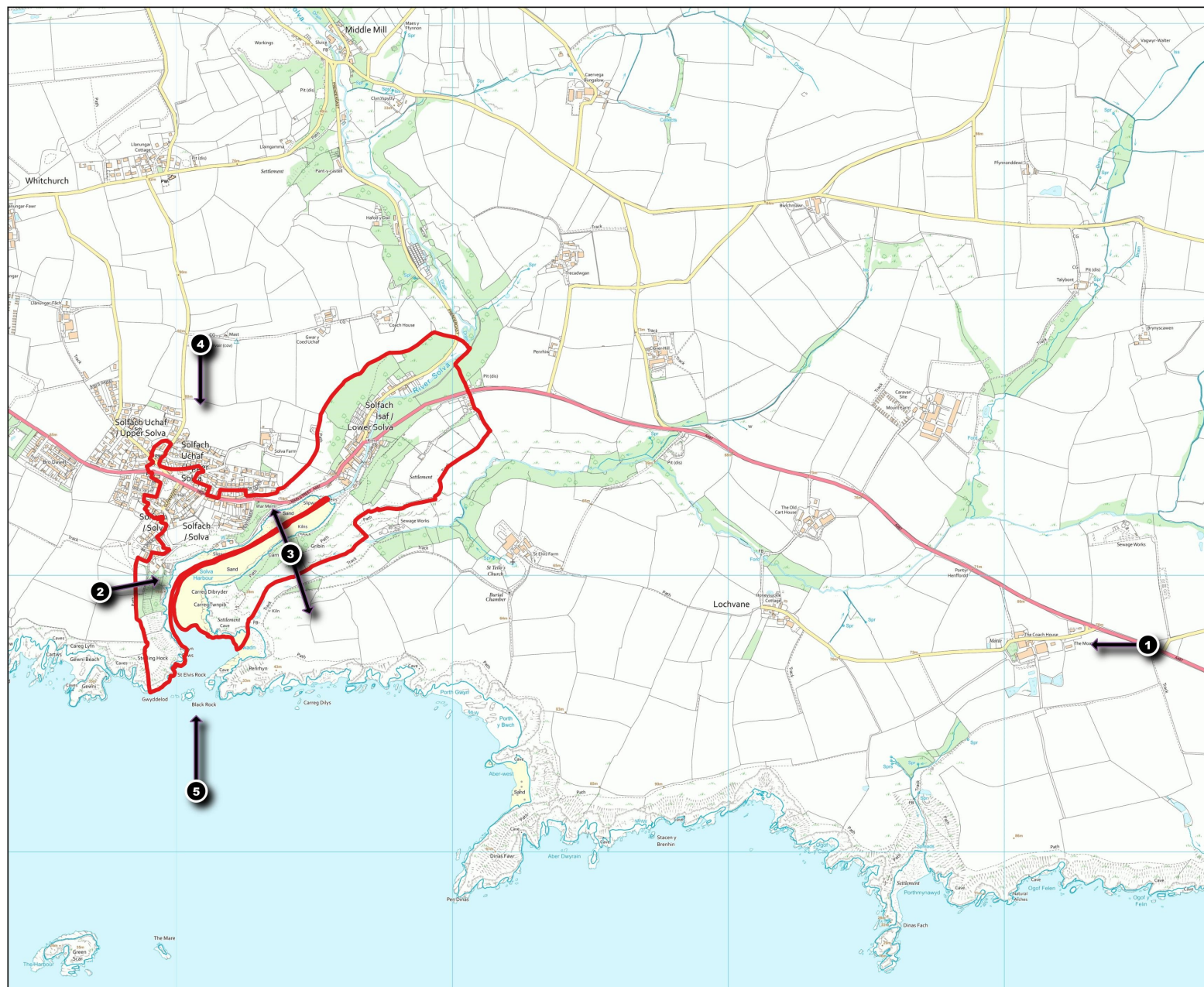


Solva
Conservation Area
Designated 1997
Character Areas
MAP 2



Solva

Prominent views into Conservation Area

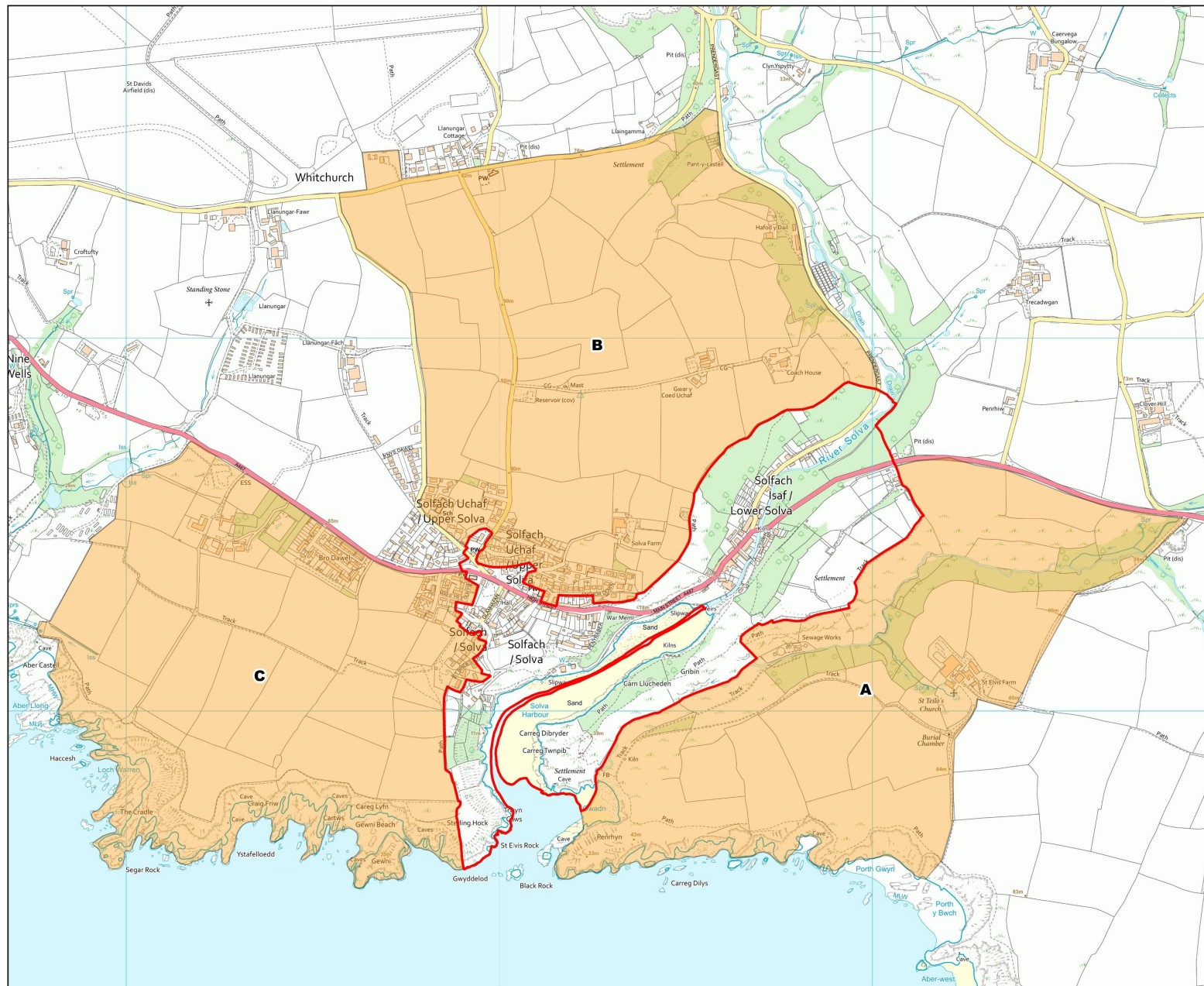


Solva Conservation Area Designated 1997 MAP 3

1. View from A487 showing Upper Solva set against backdrop of St Davids peninsula and its dramatic cairns.
2. View over harbour and Upper Solva.
3. Views over Upper and Lower Solva, St Elvis and St Brides Bay.
4. Sea views across rooftops of Upper Solva from Whitchurch Road.

Solva

Outlying areas important to the setting and character of the Conservation Area



Solva Conservation Area Designated 1997 MAP 4

- A. Valley to the east of Lower Solva (St Elvis) of archaeological, historic and landscape importance, including site of St Teilo's church, burial chamber and Ffynnon Dogfael.
- B. Area to the north of Upper Solva including open farmland, village school, medieval parish church and vicarage.
- C. Land to the south-west of Upper Solva providing important landscape setting when viewed from the sea. Llanunwas of historic importance.