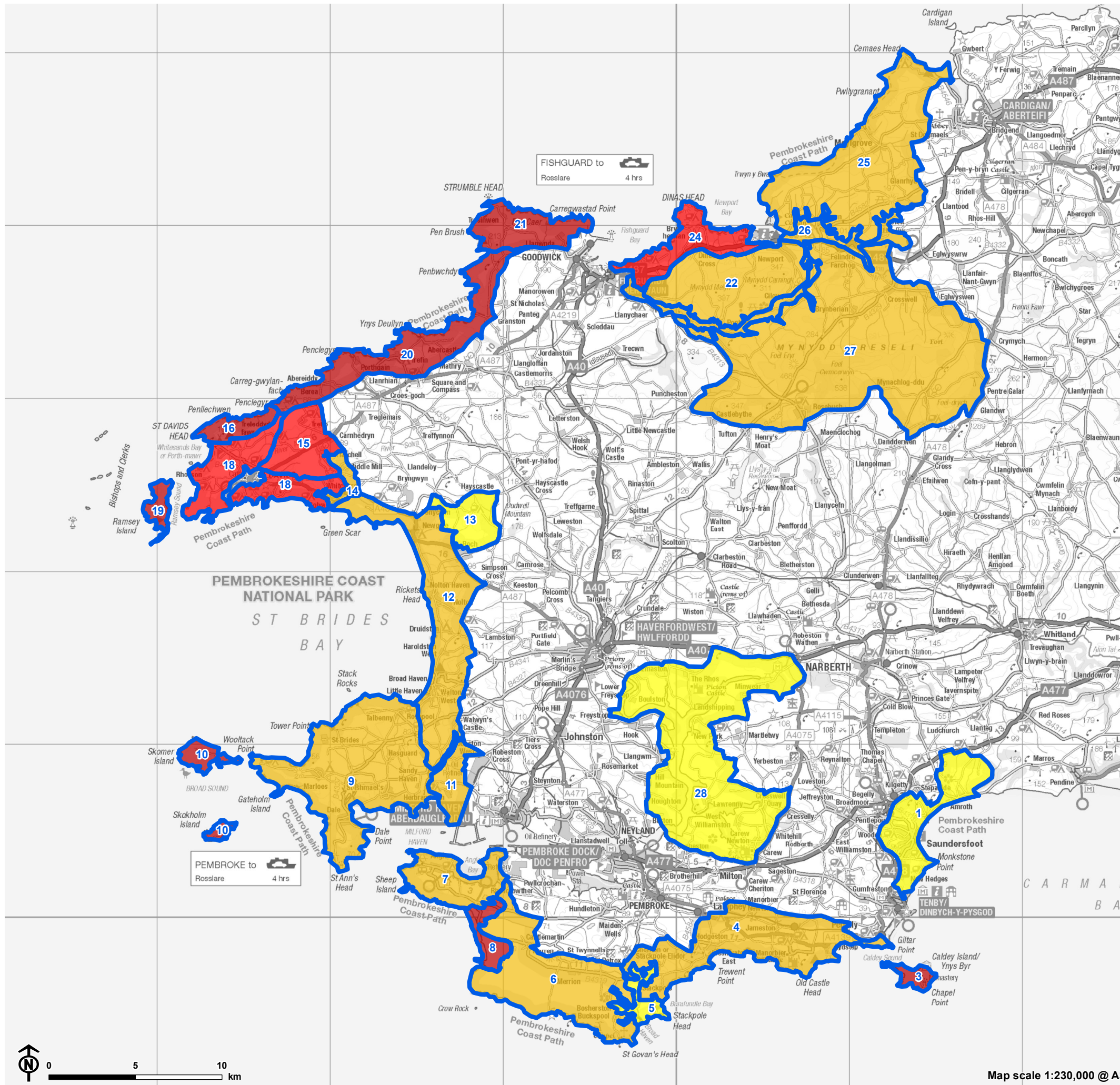
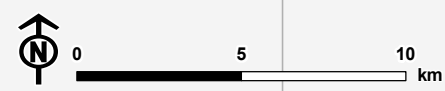


Figure 4.3: Landscape sensitivity to medium scale broadleaved woodland



- High sensitivity
- Moderate-high sensitivity
- Moderate sensitivity
- Low-moderate sensitivity
- Low sensitivity
- Landscape Character Area

- LCA 1: Saundersfoot settled coast
- LCA 3: Caldey Island
- LCA 4: Manorbier/Freshwater East
- LCA 5: Stackpole
- LCA 6: Castlemartin/Merrion Ranges
- LCA 7: Angle Peninsula
- LCA 8: Freshwater West/Brownslade Burrows
- LCA 9: Marloes
- LCA 10: Skomer & Skokholm
- LCA 11: Herbrandston Refinery Fringe
- LCA 12: St Brides Bay
- LCA 13: Brandy Brook
- LCA 14: Solva Valley
- LCA 15: Dowrog & Tretio Commons
- LCA 16: Carn Lidi
- LCA 18: St Davids Headland
- LCA 19: Ramsey Island
- LCA 20: Trefin
- LCA 21: Pen Caer/Strumble Head
- LCA 22: Mynydd Carningli
- LCA 24: Dinas Head
- LCA 25: Cemaes Head
- LCA 26: Cwm Gwaun/Afon Nyfer
- LCA 27: Mynydd Preseli
- LCA 28: Daugleddau



Map scale 1:230,000 @ A3