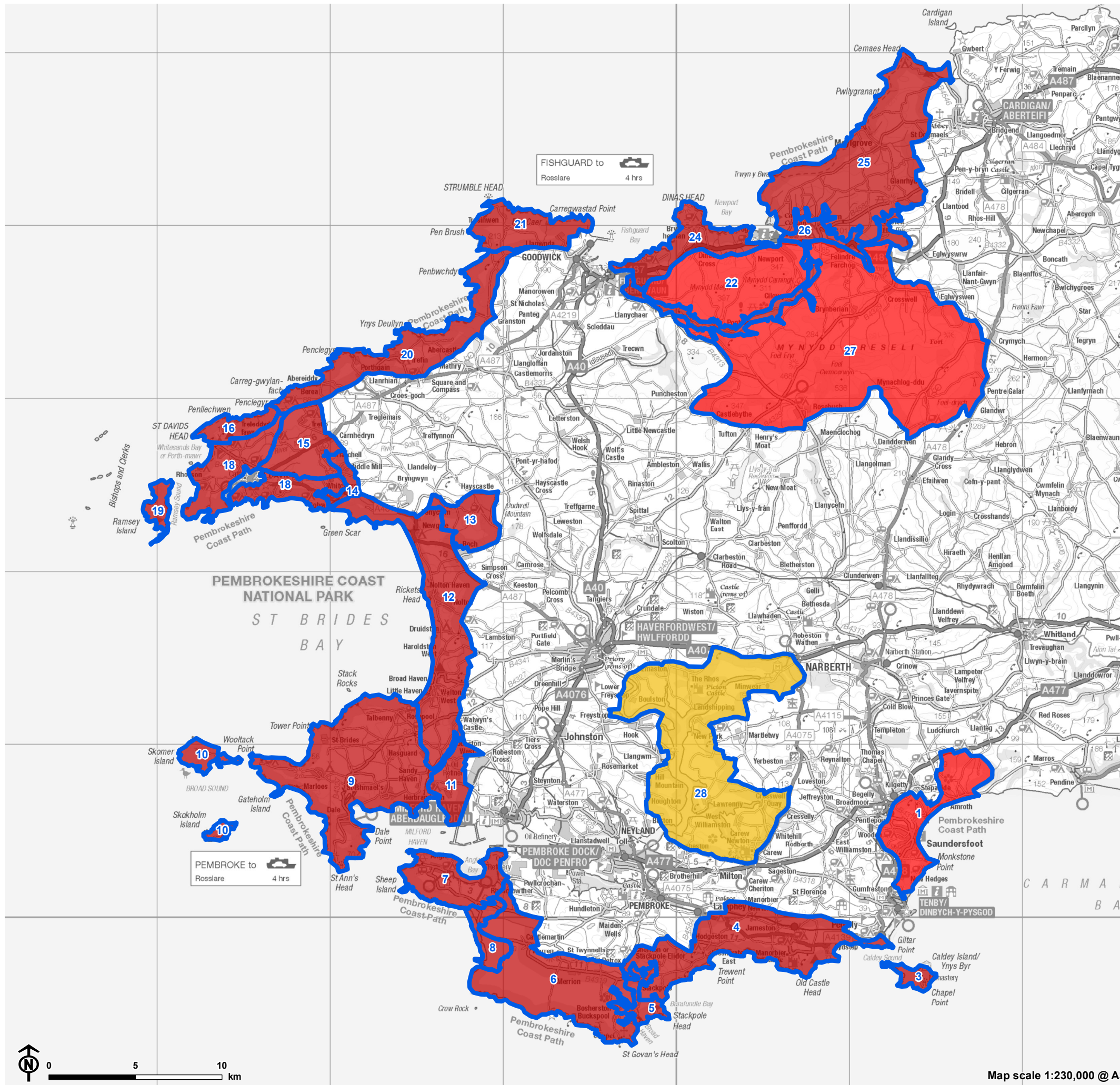
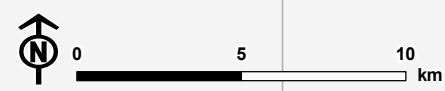


Figure 4.6: Landscape sensitivity to small-medium scale mixed woodland



- High sensitivity
  - Moderate-high sensitivity
  - Moderate sensitivity
  - Low-moderate sensitivity
  - Low sensitivity
  - Landscape Character Area
- LCA 1: Saundersfoot settled coast
  - LCA 3: Caldey Island
  - LCA 4: Manorbier/Freshwater East
  - LCA 5: Stackpole
  - LCA 6: Castlemartin/Merrion Ranges
  - LCA 7: Angle Peninsula
  - LCA 8: Freshwater West/Brownslade Burrows
  - LCA 9: Marloes
  - LCA 10: Skomer & Skokholm
  - LCA 11: Herbrandston Refinery Fringe
  - LCA 12: St Brides Bay
  - LCA 13: Brandy Brook
  - LCA 14: Solva Valley
  - LCA 15: Dowrog & Tretio Commons
  - LCA 16: Carn Lidi
  - LCA 18: St Davids Headland
  - LCA 19: Ramsey Island
  - LCA 20: Trefin
  - LCA 21: Pen Caer/Strumble Head
  - LCA 22: Mynydd Carningli
  - LCA 24: Dinas Head
  - LCA 25: Cemaes Head
  - LCA 26: Cwm Gwaun/Afon Nyfer
  - LCA 27: Mynydd Preseli
  - LCA 28: Daugleddau



Map scale 1:230,000 @ A3