

Pembrokeshire Coast National Park Local Development Plan 2
Pembrokeshire County Council Local Development Plan 1



Seascape Character

Supplementary Planning Guidance

PEMBROKESHIRE COAST NATIONAL PARK AUTHORITY

Consultation: 26 October 2022

Adoption: 20 September 2023

PEMBROKESHIRE COUNTY COUNCIL

Consultation: 5 December 2022

Adoption: 2 October 2023

CONTENTS

- 1. Introduction 2
- 2. Method 11
- 3. Overview of the Pembrokeshire Seascape 21
- 4. Cultural benefits and services 33
- 5. Forces for change..... 34
- 6. Sensitivity of seascape 37
- 7. List of Summary Figures..... 39
- 8. List of Seascape Character Areas..... 40

Appendices - see separate document

Cover photo: Ramsey Island and Whitesands Bay from Carn Llidi

1. Introduction

- 1.1 **What is Seascape:** In line with the European Landscape Convention, seascapes and marine environments should be considered as being included in the definition of landscape. The UK Marine Policy Statement (2011) (from which the Welsh Marine Plan derives) indicates that:

‘Seascape 2.6.5.1 The effects of activities and developments in the marine and coastal area on the landscape, including seascape, will vary on a case-by-case basis according to the type of activity, its location and its setting. There is no legal definition for seascape in the UK but the European Landscape Convention (ELC) defines landscape as “an area, as perceived by people, whose character is the result of the action and interaction of natural and/or human factors”. In the context of this document, references to seascape should be taken as meaning landscapes with views of the coast or seas, and coasts and the adjacent marine environment with cultural, historical and archaeological links with each other.’

- 1.2 **Local Development Plan Context:** This document forms the basis for updated supplementary planning guidance and provides more detailed guidance on the way in which the Local Development Plan policies (in particular, Policy 8 Special Qualities and Policy 14 Conservation of the Pembrokeshire Coast National Park) are applied and Policies GN.1 (General Development Policy), GN.2 (Sustainable Design, GN.34 (Protection and Creation of Outdoor Recreation Areas), GN.35 (Protection of Outdoor Spaces with Amenity Value), GN.36 (Green Wedges) and GN.38 (Protection and Enhancement of the Historic Environment) of the Pembrokeshire County Council Local Development Plan. Pembrokeshire County Council also notes the complementarity between these policies and GN.37 on Protection and Enhancement of Biodiversity. Paragraph 6.5.4, of Planning Policy Wales advises that local planning authorities need to consider both landward and seaward pressures and the impacts of these pressures. The impacts associated with such activities can be widespread and overlap between sea and coastline. They may relate to inappropriate land use, pressure for services and facilities, and impact on existing businesses and employment as well as the natural and historic character of the coastline and seascape where there is extensive inter-visibility between land and sea along the coastline.

- 1.3 The original version of this document (Seascape Character Assessment 1) covered the whole of the Pembrokeshire Coast but was only adopted by the Pembrokeshire Coast National Park Authority as Supplementary Planning Guidance.

- 1.4 Whilst only the policies in the development plan have special status in deciding planning applications, (i.e. for the purpose of any determination under the Planning Acts, the determination must be made in accordance with the Plan unless material considerations indicate otherwise), Supplementary Planning Guidance may be taken into account as a material planning consideration. In making decisions on matters that come before it, the Welsh Government and the Planning Inspectorate will give substantial weight to approved supplementary planning guidance which derives out of and has been prepared consistent with the approach set out in national policy on the preparation of Local Development Plans. Put simply, the requirements of the legislation mean that the following needs to be taken into account when considering a proposal:

- Whether the proposal meets the requirements of policies within the Development Plan; and
- Weighing up all the other planning considerations to see whether they outweigh the conclusion of the Development Plan.

Relevance to local communities – This guidance describes in detail the various aspects of coastal character (physical, natural, historical, cultural) and the coastal experience. It also describes how each character area can be sensitive to change. Community / town / City councils may wish to draw on the guidance to highlight material considerations in any response they may make regarding planning applications, in terms of conservation and enhancement of local seascape character and the benefits to communities which derive from it. Councils may also find it helpful to refer to the guidance in any projects they may be involved with.

- 1.5 **Area covered:** The seascape character assessment of Pembrokeshire includes inshore territorial waters up to 12 nautical miles from the coast and extends from Cardigan Island in the north to the Taf estuary in Carmarthen Bay in the south. The study area reaches inland to include the areas of the Milford Haven Waterway outside the Park, and up to the tidal limits of the Daugleddau (designated an Area of Special Conservation).
- 1.6 **National and Regional Seascape Studies:** The study is at a local level and was originally set within the framework of the regional Welsh Seascapes study completed by Countryside Council for Wales (whose functions have since been assumed by Natural Resources Wales) in 2009. The Welsh Seascapes study was superseded by the National Seascape Assessment for Wales in 2015.¹ The method for this study builds on current guidance and tailored to apply to Pembrokeshire and the study's location in Wales. It was the first local seascape study of its kind in Wales. There is an emphasis on an assessment of the coastal landscape's seascape character in its marine setting, although wholly marine areas away from the coast are covered. As it was one of the pilot studies for all-Wales work there has been some further refinement, such as to boundaries, in order to marry up with the adjacent seascape character assessment for Carmarthen Bay, Gower and Swansea Bay²
- 1.7 **National Park Management Plan:** The supplementary planning guidance should also be read in conjunction with the National Park Management Plan and with other guidance and baseline information including the National Park Authority's Landscape Character Assessment (2011), rolled over for Local Development Plan 2. It should also be read in conjunction with the Policies of Pembrokeshire County Council's adopted Local Development Plan (LDP 1), as referred to in paragraph 1.1.
- 1.8 **National Policy:** At a national level, the Marine and Coastal Access Act 2009 requires the Welsh Government to develop a spatial planning approach to the management of its marine areas and the study may help to inform this. The Wales National Marine Plan (2019) aims to support the shared UK vision of clean, healthy, safe, productive and biologically diverse oceans and seas and must be considered by relevant public authorities when making decisions which have the potential to affect the plan area (from mean high water spring tide mark out to 200 nautical miles).
- 1.9 The Wales National Marine Plan contains policies to inform decisions taken by public authorities. The plan indicates that landscapes within coastal and marine areas are known as seascapes and include 'landscapes with views of the coast or seas, and coasts and the adjacent marine environment with cultural, historical and archaeological links with each other'. Policy SOC_07: Seascapes sets out how proposals should demonstrate how potential impacts on seascapes have been taken into consideration. Opportunities to enhance seascapes are encouraged. The relative value of seascapes should be considered as part of decision-making and national Marine Character Areas covering the Inshore area are illustrated. Designated landscapes are recognised, including Pembrokeshire as the U.K.'s only fully coastal National Park. These are recognised as dramatic, scenic areas and particularly valued by society. – Policy

¹ National Seascape Assessment for Wales, NRW Evidence Report No 80, November 2015.

² Carmarthen Bay, Gower and Swansea Bay Local Seascape Character Assessment, City of Swansea at al, November 2017.

SOC_06: Designated landscapes, requires proposals to demonstrate how potential impacts on the purposes and special qualities of National Parks have been taken into consideration. Regarding Designated Landscapes and Seascapes, both Policies SOC_06 and SOC_07 require proposals to a) avoid adverse impacts, b) where they cannot be avoided, minimised and c) where they cannot be minimised, mitigated.

- 1.10 This SPG meets the requirement for the Authorities to: • clearly establish what the coast means for them, reflecting the characteristics of their coastlines (paragraph 6.5.6 of Planning Policy Wales Edition 11), and, • providing evidence on the natural beauty and special qualities of the PCNP, which they will have regard to in exercising their functions (paragraph 6.3.5 of Planning Policy Wales Edition 11).
- 1.11 Future Wales: The National Plan 2040 is also relevant. Policy 32 – Haven Waterway and Energy highlights potential seascape impacts of energy proposals in the waterway.
- 1.12 **Approach Taken:** This supplementary planning guidance explains the method, gives an overview of the seascape, sets out the cultural benefits and services, the forces for change and the key sensitivities. Each seascape character area is described in turn.
- 1.13 The inland boundary of the study area is defined by identifying those areas of coast which have the highest intervisibility with the sea or water body in the case of the Milford Haven Waterway and the Daugleddau.
- 1.14 A large number of datasets have been analysed to inform the study. The process followed is to define seascape character types as 'building blocks' and then define and describe seascape character areas based on these types. Site visits have helped to verify desk-based work and describe perceptual and experiential qualities.
- 1.15 The seascape types are defined as marine, intertidal and terrestrial. Twenty-one marine types are defined based on physical characteristics of bathymetry, sea bed sediments and bedrock, and wave climate. Five intertidal types are based on rock, sand/shingle, mud, saltmarsh and biogenic reefs habitats. Twenty-one terrestrial types are defined based on coastal habitats such as sand dunes, 'inland' habitats close to the coast, such as mixed woodland and scrub and land uses such as different types of built up areas.
- 1.16 Forty-four seascape character areas are defined by bringing together related marine, intertidal and terrestrial types on the coast, and broadly similar marine types offshore. Each area is described in terms of its key characteristics, physical influences, cultural influences and aesthetic, perceptual and experiential qualities. Its cultural benefits and services and key sensitivities are defined and the main forces for change affecting the area discussed.
- 1.17 **Study Area:** The study area is on Great Britain's remote western seaboard facing and including parts of the Atlantic Ocean/Celtic Sea, St George's Channel, Cardigan Bay and the Bristol Channel. The sea and coast are exposed to, and often governed by, the prevailing south westerlies. The maritime weather conditions combined with the depth of the sea and nature of the sea bed essentially define the character of the marine areas. The remote and exposed islands and islets with associated reefs and isolated lighthouses are key features of the Pembrokeshire seascape. The coast's distinctive and varied rock formations interact with the force of the sea and weather to create a wide range of dramatic coastal seascapes. Inland, the Milford Haven Waterway and Daugleddau provide contrasting sheltered seascapes, penetrating deep into Pembrokeshire's countryside.
- 1.18 Seascape character is enhanced by diverse marine and coastal habitats and wildlife of international and national importance including cetaceans e.g. dolphins and coastal birds e.g. puffins and choughs. Prehistoric promontory forts, more recent military installations, religious buildings, harbours and other historic features and wrecks indicate the area's strong connection to ancient seaways and reinforce its strong sense of place.
- 1.19 The area's qualities attract tourism and leisure pursuits, which make an important contribution to the local economy and character, but can also lead to pressures on the

coast and sea. The energy and related industry, both carbon based e.g. liquid natural gas, and developing renewables, are further forces for change with potentially strong influences on character. Traditional uses such as fishing, particularly potting, still contribute to the local economy and character.

- 1.20 **Structure of the Guidance:** The report is structured to first to explain the method used (2.0), to go on to give an overview of the seascape of Pembrokeshire (3.0), to set out the cultural benefits and services of the seascape (4.0), the forces for change (5.0) and the sensitivities (6.0). Then, each seascape character area is described in turn (8.0). The appendices deal with the information and approach underpinning the study- the data available and used, seascape character typology, and background information relating to cultural benefits and services, forces for change and factors influencing the sensitivity of seascape, aesthetic and perceptual factors and a glossary.
- 1.21 The study area is indicated on **Figure 1**. The method for deriving the landward boundary is explained in the method.



St Justinians from Ramsey Sound

How to use the Guidance

- 1.22 This seascape character assessment is a tool for the management of change in the coastal and marine environment and it is equivalent to, and overlaps the landscape character assessment for the National Park.
- 1.23 Whilst there is a spatial overlap at the coast, the information it provides complements the land-based assessments as it focuses on marine and coastal character, rather than the landscape, and importantly, the document explores the relationship between land and sea.
- 1.24 The document should be referred, in particular alongside Policy 1, Policy 8 and Policy 14 of the Pembrokeshire Coast National Park Local Development Plan and Policies GN.1 (in particular criterion 3), GN.2 (in particular criterion 2), GN.34, GN.35, GN.36 and GN. 38 of Pembrokeshire County Council's Adopted Local Development Plan (LDP 1), also noting the synergies between these policies and GN.37 on Protection and Enhancement of Biodiversity.
- 1.25 The relevant Seascape Character Area assessments should be read in full and considered within the context of the main report. The assessment integrates natural and cultural considerations and includes an understanding of how places are experienced and perceived by people. The study identifies the key elements, features and characteristics that come together to create the intrinsic sense of place and character of a given Seascape Character Area.
- 1.26 The study area includes both undeveloped and developed coast. The study is therefore highly relevant to both of the National Park coastal Centre's planning policy (Policies 2 to 6) as well as landscape/seascape conservation and to various policies in Pembrokeshire County Council's adopted Local Development Plan (LDP 1), referenced above.
- 1.27 The assessment provides baseline spatial evidence at a local scale. It complements the strategic level National Seascape Assessment for Wales which identified 29 Marine Character Areas (MCAs) to inform the Wales Marine Plan. Ten of the Marine Character Areas relate to this study area, so compared to the forty four identified in the study, there is a significant difference in grain of spatial definition. The Marine Character Areas also only cover the marine area up to the high water mark. Therefore, this local seascape assessment makes a stronger link with the coast and hinterland at a finer grain, and is therefore useful for a wider range of applications.
- 1.28 Areas where seascape character should be taken into account are:
- Within a Seascape Character Area
 - Areas adjoining a Seascape Character Area where there may be indirect linkage
 - Areas where an existing or proposed structure would be intervisible with a Seascape Character Area due to height above ground or above sea level.
- 1.29 In line with the European Landscape Convention, seascapes and marine environments should be considered as being included in the definition of landscape. The UK Marine Policy Statement (2011) (from which the Welsh Marine Plan derives) indicates that:

'Seascape

2.6.5.1 The effects of activities and developments in the marine and coastal area on the landscape, including seascape, will vary on a case-by-case basis according to the type of activity, its location and its setting. There is no legal definition for seascape in the UK but the European Landscape Convention (ELC) defines landscape as “an area, as perceived by people, whose character is the result of the action and interaction of natural and/or human factors”. In the context of this document, references to seascape should be taken as meaning landscapes with views of the coast or seas, and coasts and the adjacent marine environment with cultural, historical and archaeological links with each other.’

- 1.30 Local Development Plans only apply to the land within a local planning authority (LPA) boundaries down to the mean low water mark. There is one exception to this in Pembrokeshire³. However, Planning Policy Wales states that local plans and policies needs to consider landward and seaward pressures and related impacts on the coast.⁴
- 1.31 Seaward pressures may include waste disposal, sea fishing, increased leisure sailing, dredging of navigable channels, watersports and bathing, marine aggregate extraction, or tidal and wave power generation. Although offshore wind generation is not listed specifically in Planning Policy Wales, it is expected to be an increasingly strong seaward development pressure around the Pembrokeshire Coast.
- 1.32 Landward pressures may include major development on the coast, harbour works, leisure and recreational facilities, wind power generation and coastal defences.
- 1.33 Planning Policy Wales (Edition 11, February 2021) paragraph 6.5.9 advises ‘Development should not normally be proposed in coastal locations unless it needs to be on the coast. In particular, undeveloped coastal areas will rarely be the most appropriate location for development. Where new development requires a coastal location, developed coastal areas will normally provided the best option, provided that issues associated with coastal change have been taken into account. The seascape character assessment can assist in better describing the qualities of the coastal areas. Coastal locations considered suitable or unsuitable for development, or subject to significant constraints are shown on the Proposals Map. The seascape character assessment provides part of the evidence base to inform these spatial policies.
- 1.34 Coastal Seascape Character Areas (SCAs) include the coastal strip within the National Park itself as well as the adjacent sea. These are clearly relevant to the National Park and its planning policies. In addition, the areas that are intervisible with the sea close to the coast as defined on the Seascape Character Area maps are also relevant in terms of coastal policies.
- 1.35 The Seascape Character Areas further offshore which are not directly connected to the coast are still relevant to consideration by policy as they contribute to the character of the open sea view from coastal areas.
- 1.36 The seascape character assessment considers forces for change in each Seascape Character Area. These pressures can be helpful in guiding planning policies, such as where the effects of development pressure are noticeable.
- 1.37 The assessment should be taken into account in development briefs and design

³ Local Planning Authority control extends to the mid-channel marker around Pembroke Dock.

⁴ Planning Policy Wales Edition 11, February 2021, 6.5 Coastal Areas

guidance for all coastal developments. The basic aim should always be to carry out development which conserves and enhances the Seascape Character Area and respects its key characteristics and sensitivities.

1.38 Other policies that are likely to include consideration of the Assessment include:

PCNPA LDP	PCC LDP
<ul style="list-style-type: none"> ▪ Shore Based Facilities – Policy 17 	<ul style="list-style-type: none"> ▪ Port and Energy Related Development – Policy SP 2 ▪ Employment Land Requirements – Policy SP 3 (certain sites) ▪ Infrastructure and New Development – Policy GN.3 ▪ Employment Allocations – Policy GN.5 (certain sites) ▪ Employment Proposals – Policy GN.6
<ul style="list-style-type: none"> ▪ Porthgain, Saundersfoot, Solva, Tenby Harbours – Policy 18 	<ul style="list-style-type: none"> ▪ Marinas – Policy GN.21
<ul style="list-style-type: none"> ▪ Renewable energy - Policy 33 	<ul style="list-style-type: none"> ▪ Resource Efficiency and Renewable and Low-carbon Energy Proposals – Policy GN.4
<ul style="list-style-type: none"> ▪ Caravan and camping policies - Policy 41 	<ul style="list-style-type: none"> ▪ Touring Caravan and Tent Sites – Policy GN.18 ▪ Static Caravans – Policy GN.19 ▪ Site Facilities on Existing Caravan and Camping Sites – Policy GN.20
<ul style="list-style-type: none"> ▪ Climate change mitigation and adaptation responses – Policy 34 to Policy 37 	<ul style="list-style-type: none"> ▪ No direct policy equivalent.
<ul style="list-style-type: none"> ▪ Recreation and Tourism – Policy 38 	<ul style="list-style-type: none"> ▪ Visitor Economy – Policy SP 5 ▪ Visitor Attractions and Leisure Facilities – Policy GN.16 ▪ Self-Catering and Serviced Accommodation – Policy GN.17

1.39 The seascape character assessment is a useful tool for development management both for decision-makers and assisting developers, landowners and their consultants.

1.40 As stated above, the seaward limit of terrestrial planning control is generally the mean Low Water Mark with one exception in Pembrokeshire as noted above, but between high and low water mark the planning system usually needs to operate in conjunction with a range of other controls over coastal and marine development, such as licensing. Decisions on development proposals seaward of the mean Low Water Mark are generally outside the scope of the terrestrial planning system. However, developments on the coast can have effects on the marine environment and should be considered in the context of the seascape character assessment. Often, marine developments also have a coastal component.

1.41 For marine developments themselves, Local Planning Authorities are not the decision-making authorities but are statutory consultees. Planning and Environment Decisions Wales (PEDW) deals with Developments of National Significance (DNS) on behalf of

Welsh Government and Nationally Significant Infrastructure Projects on behalf of the UK government. Local Planning Authorities and Natural Resources Wales can suggest what information should be taken into account and this should include the local seascape character assessment as the most detailed marine spatial seascape assessment. LPAs can prepare Local Impact Reports (LIRs) setting out how they see the development affecting their area and Natural Resources Wales will also provide advice. The Seascape Character Assessment should inform such reports.

- 1.42 Overall, the seascape character assessment provides baseline evidence which can inform where and what type of development would be likely to be acceptable in terms of seascape, landscape and visual impact. The information is applicable to a wide range of scales of development - from individual dwellings on rural coastlines and structures such as lifeboat stations through to offshore developments. The level of detail required will depend on the scale and likely effect of any given development, and will be defined by the Local Planning Authority. The required output will range from a statement of likely effects on seascape character through to a full seascape, landscape and visual impact assessment (SLVIA or SVIA) as part of an environmental statement.
- 1.43 Seascape character needs to be considered where a proposed development lies within a Seascape Character Area or there is intervisibility between the development and Seascape Character Area/s. This may be defined by the use of computer-generated Zones of Theoretical Visibility (ZTVs) or by other means which provides robust and justifiable evidence.
- 1.44 As part of their assessment of effects on seascape character, developers and their consultants should describe how the proposals have responded to the key characteristics and qualities of the Seascape Character Areas. In doing so, they should have particular regard for the conservation and enhancement of those aspects which contribute to the Pembrokeshire Coast National Park's Special Qualities.
- 1.45 The method for assessing the effects on seascape character are similar as assessing the effects on landscape character which are set out in the Guidelines for Landscape and Visual Impact Assessment (GLVIA) published by the Landscape Institute (see page 76 in the current Third Edition, 2013). It is suggested that the effects on individual seascape character areas are assessed in the same way as the effects on landscape character areas or LANDMAP aspect areas. Depending on the scale of development, there may be a case to subdivide Seascape Character Areas into smaller areas which may have slightly different characteristics (and potentially different level of effects). This would need to be done in line with the current seascape character assessment method.
- 1.46 It is important to emphasise that due to the openness and generally unspoilt character of the sea that the effects of marine development within it could have a substantial impact on surrounding areas intervisible with it. Similarly, development on areas of coast or hinterland exposed to view from the sea has the potential for significant effects on the character and users of the sea, even if outside a Seascape Character Area. The effects not only include visual impact but also the effects on coastal processes which could more fundamentally change the character of an area. For example, a marine development may interrupt and change current sedimentation processes so that some parts of the coast are starved of sand while others may accumulate sand in greater quantities.
- 1.47 The seascape character assessment provides a list of factors that contribute or detract from sensitivity. These should be taken into consideration when defining a level of

sensitivity for a given seascape character area in relation to a specific type of development.

- 1.48 The assessment lists key characteristics informed by detailed descriptions. It should be assessed if those key characteristics are removed or changed by the proposed development, or if the development itself would become a key characteristic. The greater the effect, the more likely it is to be significant. In considering the character of a Seascape Character Area and how development may affect it, the detailed descriptions should be fully taken into account as well as the key characteristics. If key characteristics change, or are lost, there would be significant consequences for the current character of the landscape/seascape.
- 1.49 Development should be assessed to see if it is in line or in conflict with policies relating to landscape/seascape character. The effect on National Park qualities and how they are conserved or enhanced should also be explored.
- 1.50 The developer should employ suitably qualified chartered landscape architects who are experienced in seascape assessment to carry out SLVIAs/SVIAs. Similarly, for larger scale developments, the local planning authorities may also be advised by suitably qualified specialists to ensure that the assessments are carried out in line with good practice and arrive at reasonable conclusions which can be relied on for decision-making.

2. Method

Development of seascape character assessment methodology

- 2.1. The method for this study seeks to build on current guidance but is tailored for the particular scale of assessment, for Pembrokeshire and the study's location in Wales. It was the first local seascape study of its kind in Wales and may help set the pattern for future local studies. The brief is clear in its emphasis on an assessment of the coastal landscape's seascape character in its marine setting although wholly marine areas away from the coast require coverage, and many are intervisible with the coast in any case.
- 2.2. The terms used in the study are to be found in the Glossary in **Appendix G**. This uses terms primarily defined by Seascape Character Area and Landscape Character Area guidance. Other sources include the European Landscape Convention, and LANDMAP to ensure that there is compatibility with existing assessments in the Welsh context.
- 2.3. The original study was prepared within the context of the regional seascape character assessment 'Welsh seascapes and their sensitivity to offshore developments' which was carried out broadly in line with Countryside Council for Wales-led 2001 seascape guidance. However, it piloted a new method developed from 'An approach to Seascape Character Assessment' which remains current. In Wales, a pilot study for Countryside Council for Wales in north-west Anglesey in 2012 tested the use of different information to define types and character areas at a regional and local level and this also informed the method. For this updated guidance, the main additional guidance relates to seascape sensitivity. Though this has been prepared for the Marine Management Organisation it is considered to be relevant to Welsh waters with NRW staff involved in consultation on the document.
- 2.4. The relevant seascape guidance mentioned above and taken into account by this study is as follows, in date order:
 - Guide to best practice in seascape assessment, Hill et al, Countryside Council for Wales and University College, Dublin, Brady Shipman Martin, 2001.
 - Guidance on the assessment of the impact of offshore windfarms: seascape and visual impact report, Enviros, Department of Trade and Industry, 2005.
 - An assessment of the sensitivity and capacity of the Scottish seascape in relation to windfarms, University of Newcastle, Commissioned Report no. 103, Scottish Natural Heritage, 2005.
 - Welsh seascapes and their sensitivity to offshore developments, Briggs, J.H.W. & White, S, Countryside Council for Wales Policy Research Report No. 08/5, January 2009.
 - Dorset Coast Landscape and Seascape Character Assessment, LDA, C-SCOPE, 2010.
 - An approach to Seascape Character Assessment, (NECR105), Natural England, Scottish Natural Heritage and Countryside Council for Wales, 2012.

- Seascape Characterisation around the English Coast (Marine Plan Areas 3 and 4 and Part of Area 6 Pilot Study) (NECR106), Natural England, 2012.
- An approach to seascape sensitivity assessment (MMO 1204), White Consultants, December 2019.

NRW evidence reports on seascape and visual sensitivity to offshore wind farms, which is structured between the following three reports:

- Stage 1 - The relationship between distance of offshore turbine away from a sensitive receptor and magnitude of visual effects
- Stage 2 - Offshore wind farm siting and design guidelines in relation to seascapes
- Stage 3 – Visual sensitivity of the marine settings of Wales’s Designated Landscapes to offshore wind farms

2.5. In terms of status, the Natural England 2012 approach is advisory but generally accepted for use in Wales.

2.6. The scale of the assessment is at local authority level. In Wales, there is the national seascape assessment above. In England, there are four levels with the most detailed/lowest level also named ‘local scale’. However, this addresses individual bays, coves or rocky coastlines. This is considered to be at a greater level of detail than required for this study and equates more with detailed Shoreline Management Plan areas on the coast.

2.7. Other guidance prepared primarily for landscape and visual assessment is also relevant to this study. It is important to ensure that terms and approaches to seascape are the same as for landscape insofar as the substantially different qualities of the two environments allow. Relevant publications to the updated guidance include:

- Skye and Lochalsh landscape assessment, Stanton, C. Scottish Natural Heritage Review No.71, 1996.
- Guidelines for Landscape and Visual Impact Assessment, third edition, Landscape Institute and Institute of Environmental Assessment, 2013.
- An Approach to Landscape Character Assessment, , Christine Tudor, Natural England, October 2014.
- An approach to landscape sensitivity assessment, Christine Tudor, Natural England, June 2019.
- The LANDMAP Information System, Countryside Council for Wales, March 2012.
- Assessing landscape value outside national designations, TGN 02-21, Landscape Institute, 2021.
- GN 017 Landscape Sensitivity Assessment Guidance for Wales, 2022.

2.8. The documents are referred to in the text and appendices as appropriate below.

Approach to collection of data and mapping

2.9. Data for the study was provided by the Countryside Council for Wales for the original study, Natural Resources Wales (for the current study), the National Park Authority (via Welsh Government) and Pembrokeshire Coastal Forum as defined in **Appendix A**. The data provided and suggested from other sources covers a very large range of information. Some of the data has been found to be essential for defining Seascape Character Types whilst other data has been useful in defining Seascape Character Areas and assisting in their description. Not all

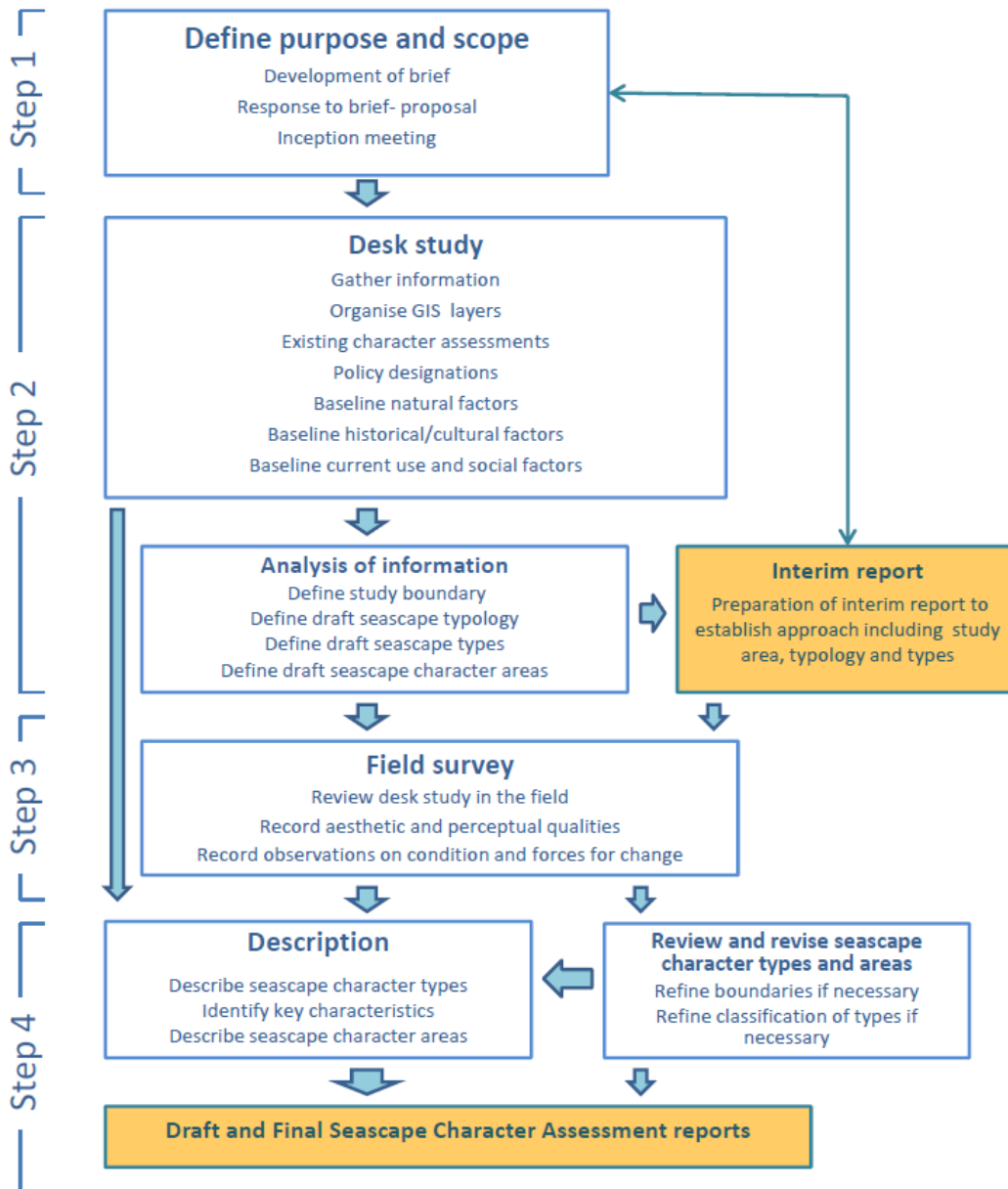
marine data necessary has been available and some time has been needed to explore sources and availability. It is hoped that this study defines more clearly what is required for a Seascape Character Assessment. The Appendix notes the key datasets.

- 2.10. Non-geospatial data from the UK Coastal Atlas for Recreational Boating prepared by the Royal Yacht Association (RYA) used in descriptions of marine use of each Seascape Character Assessment. Oceanwise geospatial and web data on marine wrecks has provided information in sufficient detail to make unnecessary the use of chargeable data from Royal Commission on the Ancient and Historical Monuments of Wales (RCAHMW).

Study process

- 2.11. A flow diagram of the process is shown in **Figure A**. This shows the series of tasks and reporting undertaken.

Figure A: Flow Chart of Study Process



- 2.12. The interim report was important to set out the framework for the assessment and to define a typology. Feedback from the client steering group then informed the refinement of the Seascape Character Types and definition of Seascape Character Areas. In practice there was an ongoing dialogue between the consultant team and client to guide study boundaries, Seascape Character Areas, Seascape Character Areas descriptions and presentation.
- 2.13. A multi-disciplinary team addressed the various aspects of the assessment coordinated by a landscape architect/seascape specialist. The aspects have included geology/marine and coastal processes, cultural and historical factors, marine and coastal uses including tourism and recreation, seascape, landscape and visual factors and Geographical Information Systems(GIS). GIS was used to help define the Seascape Character Types as mentioned above and expanded on below. Existing studies and GIS datasets have been used to provide the basis for the boundaries, context and description for each Seascape Character Area. In practice, the study has been iterative with refinement of boundaries and descriptions dependent on information feeding into the process.
- 2.14. Site survey work was undertaken by two seascape specialists. The purpose was to refine Seascape Character Area boundaries if necessary, to explore aesthetic and perceptual qualities and to note forces for change and potential sensitivities. Representative viewpoint locations were chosen, coinciding with Seascape Character Areas and their boundaries where possible to optimise efficiency. Structured fieldwork sheets allowed the characteristics and use of the area to be noted as well as the aesthetic and perceptual experience. A sample is shown in **Appendix H**. Representative photographs were taken from each viewpoint except on a few occasions when rain prevented this. The site visits in the winter season meant that the area has been observed when not being used as fully as in the summer and weather and poor sea conditions have led to survey work being primarily onshore. This was mitigated by the team's local knowledge through living and working in the area and by datasets such as the Welsh Activity Mapping (WAM) dataset. The coastal visits covered the majority of the coast and Daugleddau / Milford Haven Waterway, omitting only a small number of areas for which the study team had prior detailed knowledge through previous site work for other landscape or seascape related projects or through leisure use over a long period. The site visits were generally carried out in acceptable visibility for Landscape Character Area / Seascape Character Area work although there were intermittent periods of rain as already noted. One sea trip was undertaken which ran from Milford marina out to the middle of St Brides Bay covering intermediate areas including Seascape Character Areas 24, 25, 26, 28, 31 and 32. This has given an indication of sea conditions, marine seascape character and the visibility and perception of the coast and its influence at different distances. Team members have previously travelled across Ramsey Sound as part of a Seascape and Visual Impact Assessment and around Ramsey Island (Seascape Character Areas 17 and 18). Overall, the combination of site visits, knowledge of the area and desk study is considered to have been sufficient to inform the study to the appropriate level of detail. The update study has been desk based with revised photos taken where change has occurred by National Park staff.

Defining boundaries

- 2.15. The parameters governing the study area boundaries are defined in Appendix 2 of the brief to include the National Park and its setting, and also the remainder of Pembrokeshire. The study area is 12 nautical miles (nm) out from the coast and islands such as the Smalls, defined by a line 90 degrees from the coast from Cardigan Island to the north and Pendine Sands to the south east (see **Figure1**).
- 2.16. Discussion of the inland extent with the client steering group at the inception meeting indicated a desire that the inland boundary should include land which has

a strong visual relationship with the sea/tidal waters, not just coastal landscape character types such as dunes or cliffs. Areas with some intervisibility with the coast could be excluded. The inland extent has therefore been defined by overlaying 1:25,000 Ordnance Survey mapping, the LANDMAP visual and sensory layer, the Countryside Council for Wales dataset of land with intervisibility with the sea and Phase 1 intertidal habitats which define the tidal limits. Google Earth with Street View has further informed boundaries.

- 2.17. Initially areas with a high intervisibility with the sea were mapped (red or orange graded squares in the mapping). This line sometimes went inland, e.g. at Mynydd Carningli, and sometimes ran close to the coast where there was a coastal plateau. For the areas bounding the Milford Haven Waterway, areas of lower visibility (blue squares) were marked as they only had views of the inland waters rather than the open sea and therefore would have a lower rating. Nevertheless they would contribute to seascape. Areas with visibility of the sea but not connected to the coast or with weaker intervisibility were not included. These coarse boundaries were then refined by studying and responding to the landform including high points and ridgelines. The extents of the tidal areas were checked so that they were included in the study area. The boundaries were then rechecked against the visibility mapping and using Google Earth street view in areas of uncertainty. In some areas such as peninsulas (i.e. Marloes and the western end of the St David's peninsula) all land has been included due to the highly maritime, exposed character of the landscape. The terrestrial types have been defined up to this inland boundary.

Deriving Seascape Character Types (SCTs)

- 2.18. A draft typology of marine, intertidal and seascape character types with a proposed nomenclature was prepared and submitted as part of the interim report. This built on the Countryside Council for Wales pilot study in Anglesey / North Wales, knowledge of Wales seascapes and coastline overall, LANDMAP and of the Pembrokeshire marine and coastal environment. It also reflected the requirements of the brief. A different approach was taken for each of the three categories, explained below.

Deriving Marine Seascape Character Types

- 2.19. The marine Seascape Character Types differ from the NECR105⁵ approach as they form 'building blocks' from which the proposed Seascape Character Areas amalgamate. (In NECR105, types are generic classifications which may cover a number of large areas which themselves are individual Seascape Character Areas.) The types are also proposed to be at one level, the local authority level, reaching out to sea the full 12 nautical miles offshore.
- 2.20. The Seascape Character Types extend from the 12 nautical mile limit to the edge of the intertidal types which were defined first. It was decided that the prime drivers of difference in marine character were the physical characteristics of bathymetry, sea bed sediments and bedrock, and wave climate. From this, other secondary characteristics flow such as sea use which has been used as a contributor to the definition of types elsewhere. For instance, sandbanks tend to have shallow water and higher waves and would be avoided by boats / shipping. Deep water high wave coasts tend to be avoided or used in a limited way e.g. Strumble Head coastal waters. Coarse sediment or bare rock on the sea bed such as in Ramsey Sound indicates higher water energy whilst fine sediments such as mud indicate

⁵ An approach to Seascape Character Assessment, (NECR105), Natural England, Scottish Natural Heritage and Countryside Council for Wales, 2012.

low energy, such as the middle of St Bride's Bay, where tankers anchor. The three main drivers were subdivided as follows:

- Shallow depths 0-30m, moderate depths 30-60m, and deeper waters >60m.
- Sea bed sediments ranging in grain size from gravel to sand to mud and bedrock exposed on the sea floor towards islands/islets. Sea floor sediment is contributed to by erosion, lost through depositional processes, and may be transported by currents along the coastline.
- Wave climate – relating to exposure (wind), tidal and current conditions

2.21. The following data has been used to inform the classification:

- British Geological Society Bath250- for Bathymetry/depths of water- provided by the Countryside Council for Wales
- British Geological Society DigMap250- for sediment seabed geology-
- Wave climate from data obtained for the Countryside Council for Wales by Land Use Consultants in a pilot study.

2.22. Types were defined and then further qualities were added to each type to further inform potential seascape character area boundaries. These were:

- Sea floor topography – slopes, channels/troughs, islets.
- Turbulence
- Bedrock type

2.23. The typology was tested on two pilot study areas: Ramsey Sound and the mouth of Milford Haven. The technique picked up a mix of fine grain areas such as the three types in the tidal strait of Ramsey Sound, which slopes into a central trough and is more steeply shelved and sheltered on the west side than the east. Similarly, the area across the islets W of Ramsey has north-east / south-west lines of islets flanked by shallow slopes, controlled by igneous bedrock geology, and separated by a deeper channel presumably used by shipping. In the Milford test area, the seaward limit of the estuary mouth was placed at the 30m depth contour which also subsequently was found to coincide with the extent of the Milford Haven Harbour Authority Area. The types therefore appeared to usefully differentiate areas as a suitable building block for Seascape Character Areas.

2.24. There are 26 marine types spread across 81 defined Seascape Character Types. The relationship between the drivers/factors can be discerned in **Figures 2, 3 and 4** and the numbered SCTs are summarised in **Figure 14**.

Deriving Intertidal Seascape Character Types

2.25. The brief stated that Intertidal types should be defined by the Phase 1 habitat intertidal dataset. This is an extremely detailed, fine grain and apparently accurate dataset and was therefore used to define the limits of the marine and terrestrial types on either side. As the dataset was quite complex such as differentiating between different types of rocks in narrow bands along rocky shores (e.g. high, medium and low energy littoral rocks) it was decided to amalgamate these into simpler categories which make sense at a seascape scale. The types were defined as:

- Mud
- Sand and shingle
- Rock
- Saltmarsh or saline reedbed

- Biogenic reef.

Deriving Terrestrial Seascape Character Types

2.26. Terrestrial types are based on LANDMAP Landscape Habitat aspect Level 3 layer which complements the intertidal layer in terms of its Phase 1 derived source material but is at a larger, landscape scale. The aspect areas have been rationalised and amended to obtain a reasonable grain of landcover definition without new digitising. This has meant that small scale settlements have not been defined but these are considered within the Seascape Character Area description. The types are defined as:

- Sand Dune
- Beach/rough ground above High Water Mark
- Coastal heath and grassland mosaic
- Maritime cliff and slope
- Grassland and semi-natural mosaic
- Grassland mosaic (Ministry of Defence range)
- Tall Herb and Fern (bracken)
- Heathland
- Broadleaved woodland and scrub
- Mixed woodland and scrub
- Coniferous forest
- Woodland mosaic
- Mixed farmland
- Mixed farmland and woodland
- Improved grassland with woodland
- Pastoral farmland
- Grazing marsh
- Wet mosaic
- Mire and Swamp
- Open water
- Built up area
- Built up (industrial)
- Built up (port)
- Built up (resort)
- Amenity

Overall comments on types

2.27. The full typology is as set out in **Appendix B**. The types reflect the scale and character of the underlying seascape/landscape. Marine types are generally larger scale further from the coast with smaller areas along more complex stretches of coast such as around islands. Intertidal types are generally very narrow, especially along rocky coasts and are not apparent on larger scale maps. Terrestrial types vary in scale with farmland and pastoral types covering large

areas of hinterland extending to the coast in places. There are smaller areas of the important coastal and dry mosaic areas dominated by semi-natural habitats.

Deriving Seascape Character Areas

- 2.28. The boundaries of the Seascape Character Areas have been primarily driven by the marine Seascape Character Types as these define the character of both the marine areas and the coast with different geological formations. These in turn dictate coastal and sea use to a large extent. The brief required coastal Seascape Character Areas to include coast and marine components along with the relevant hinterland. Purely marine Seascape Character Areas were also expected. The boundaries of each coastal Seascape Character Area running inland is primarily defined by landform and geology or the viewshed separating adjacent Seascape Character Areas. The intertidal and terrestrial types have generally not been definitive in determining boundaries and Seascape Character Area boundaries therefore divide up these types which have been split in geospatial data layers as requested by the brief. The types have informed the descriptions for each Seascape Character Area.
- 2.29. The Seascape Character Area boundaries predate the Marine Character Areas. The latter follow some of the local boundaries but overall are at a broader brush scale with associated criteria.

Aesthetic and perceptual factors

- 2.30. Aesthetic and perceptual factors are important in undertaking a character assessment. This information cannot be fully researched as part of the desk study and so has been collected as part of the site survey. Whilst aesthetic terms can be collected in a reasonably objective way, perceptual terms are more subjective. Both rely on the professional judgement of the surveyor. The assessment is structured in a systematic way to produce as consistent a survey as possible. In order to achieve this, each term has been defined and a sample illustration prepared for aesthetic terms. The latter cannot hope to capture all instances but relates to certain scenarios which may occur in the study area. The terms have been used as a checklist for the site survey forms / Seascape Character Area descriptions. They derive from seascape guidance in England and Wales, landscape character guidance and the Skye and Lochalsh Landscape Character Assessment. The definitions were derived and adapted from LANDMAP guidance (2003) where possible to try to achieve consistency between the assessments. The proposed terms and definitions are shown in **Appendix F**.

Sensitivity

- 2.31. New guidance on seascape sensitivity in (MMO, 2019) has resulted in a modification of the treatment of sensitivity in this study. Seascape character sensitivity is a term applied to marine character and seascape and the associated visual resource, combining judgements of their susceptibility to a *specific type of development / development scenario* or other change being considered and the value(s) related to that seascape, marine character and visual resource. Different types of development could affect the same area in different ways and may require different scales of approach. For instance, offshore windfarms are considered in a separate national study⁶. Therefore, the sensitivity section is structured to explore indicators that should be considered in assessing an area's susceptibility to development/change. In addition, those factors which contribute to value are explored. Often there is an overlap between factors but they are relevant in different ways to both susceptibility and value. This section

⁶ Seascape and visual sensitivity to offshore wind farms in Wales: Strategic assessment and guidance. Stages 1-3. NRW Evidence Series. Report No: 315, NRW, Bangor, 2019.

can be used to inform sensitivity assessments for particular types of developments using appropriately selected and modified criteria and indicators.

- 2.32. Landscape Institute guidance on value (2021) is intended to be used outside national designations but relevant factors and indicators will be taken into consideration in the revised assessment.



Barafundle Bay

3. Overview of the Pembrokeshire Seascape

3.1 Local Development Plan 2 provides a suitable introduction to the Pembrokeshire Coast National Park seascape stating that it:

'is widely recognised as Britain's only predominantly coastal National Park. The splendour of its coastline, the influence of the seascape, its spectacular scenery, and rugged, unspoilt beauty, provide a scenic quality which was recognised in its designation as a National Park along with the spectacle of the islands off the Pembrokeshire coast.' (4.56)

3.2 The special qualities of the National Park are those characteristics and features of the National Park which individually or in combination contribute to making this National Park unique. (4.52 of the Pembrokeshire Coast National Park Local Development Plan 2)

Table 4 Special Qualities (Pembrokeshire Coast National Park Local Development Plan 2)

Coastal splendour	Richness of habitats and biodiversity
Diverse geology	Islands
Diversity of landscape	Accessibility
Distinctive settlement character	Space to breathe
Rich historic environment	Remoteness, tranquillity and wildness
Cultural heritage	The diversity of experiences and combination of individual qualities

Although there is no direct equivalent in Pembrokeshire County Council's adopted Local Development Plan (LDP 1), policy GN.1, criterion 3 refers to landscape character, quality and diversity, including the special qualities of the Pembrokeshire Coast National Park and neighbouring authorities. Policy GN.2 of the same Plan, criterion 2, refers to local character and landscape / townscape context.

3.3 The study area coastal boundary runs from Cardigan Island in Cardigan Bay to the north, to the Taf estuary area in Carmarthen Bay to the south. It is on Great Britain's remote western seaboard facing the Atlantic Ocean/Celtic Sea due west, St George's Channel to the north east, Cardigan Bay to the north, and Bristol Channel to the south east and east. The sea and coast are exposed to, and often governed by, the prevailing south westerlies. The area's resulting distinctive maritime climate means the weather is almost always different from that occurring further east in the UK. The area's distinctive and varied rock formations interact with the force of the sea and weather to create a wide range of dramatic seascapes.

Physical influences

GEOLOGY AND COASTAL FORM

3.4 Pembrokeshire has virtually continuous exposure of rocks in cliffs, headlands and bays around its long coastline. In addition, there are extensive areas of sand

dunes, such as those at Freshwater West, Frainslake and Broad Haven South. Some locations have shingle banks such as the one at Newgale or extensive sand areas such as Poppit. It is an area rich in rock types and formations, with varied character and used extensively for the study of geology.

3.5 The rock succession spans from late Precambrian (<650 Ma (million years ago)) to late Palaeozoic (285 Ma). The offshore bedrock, beneath the sea floor sediments, is overlain by younger rocks. The rocks in Pembrokeshire show the effects of ancient mountain-building episodes that uplifted, deformed and eroded rocks, leaving characteristic structural trends that control the direction of the landform. More recently, repeated glaciations have further shaped the landscape leaving sediment deposits. In the last glaciation (18,500 years ago), north Pembrokeshire to St Bride's Bay was covered by an ice sheet, but this didn't extend across southern Pembrokeshire, where tundra conditions would have been found.

3.6 Precambrian rocks are exposed only in small areas along the southern St David's peninsula. They comprise metamorphosed sedimentary rocks and intrusions. Cambrian marine sandstones and shales are also well exposed on the St David's peninsula e.g. Solva. In the Ordovician era, thick successions of deeper water shales with graptolites (e.g. Abereiddi), and turbidites (e.g. Poppit Sands) were deposited with high cliffs on the north coast reaching 150mAOD around Pen yr Afr. Spectacular Ordovician sandstone cliffs reach 140mAOD around Penbwchdy. There was also widespread volcanic eruption and intrusion of magmas. The resistant igneous rocks include the spectacular pillow lavas of Strumble Head with cliffs 50mAOD high, the rhyolitic rocks on Ramsey Island, and prominent tors (e.g. Carn Llidi at 181mAOD high -St David's Head gabbro, Garn Fawr at 213mAOD high and Penberi). The islets of the Bishops and Clerks are mostly igneous, representing continuation of this pattern into offshore areas. Local volcanic activity centred on Skomer Island. The Marloes peninsula has extensive coastal exposure of these rocks, while their offshore continuation is shown by the islands/islets of Skomer, Grassholm and the Smalls. The siltstones, limestones and sandstones of the period were formed in warm shallow, fossiliferous seas (brachiopods, corals). Towards the end of the Silurian a transition from marine to non-marine conditions is shown by the change to red-bed deposition of the Old Red Sandstone (e.g. St Anne's Head at 46mAOD high, Freshwater West with its wave cut platform, Freshwater East and Pendine). This continues into the Devonian, represented by red sandstones and mudstones laid down on coastal plains, mudflats, salt marshes and in braided rivers. These terrestrial environments were inhabited by early plants, armoured fish and amphibians. The collision of continents created folds and faults which is widely evident in the cliffs of north Pembrokeshire (e.g. Abereiddi Bay).



High cliffs at Penbwchdy

3.7 Devonian sedimentation continued in red beds, representing sediment deposited in rivers and on floodplains as the mountains eroded. The Carboniferous saw a return to marine conditions, with the Carboniferous Limestone laid down with shoals and lagoons (rich in corals, brachiopods). The Limestone forms prominent headlands and is exposed in steep coastal cliffs in south Pembrokeshire (e.g. Linney Head at 40mAOD high, Trevallen, Stackpole at 35mAOD high). This limestone coast displays distinctive erosion features such as stacks, caves, arches and blowholes. In mid to late Carboniferous times sedimentation changed to sandstones and mudstones of rivers and delta plains vegetated by giant ferns and horsetails. The peat swamps form the source for coals of the Coal Measures (Pembrokeshire Coalfield). Further continental collision led to the uplift resulting in east-west folds and faults, well seen in south Pembrokeshire (e.g. Ladies anticline at Saundersfoot, Stackpole, West Angle Bay).



Carboniferous limestone cliffs: Whitesheet Rock

3.8 Younger rocks (Permian, Mesozoic and Cenozoic) are preserved in the offshore bedrock. Triassic terrestrial sandstones, and Jurassic marine mudstones and limestones, are comparable to the rocks seen along the Vale of Glamorgan coast. Triassic rocks form the offshore bedrock in the Bristol Channel Seascape Character Areas. They are cut by many east-west stretching faults formed during subsidence of the Bristol Channel basin. Cretaceous sea levels were exceptionally high, and the coastal plateaus of headlands in west Pembrokeshire (e.g. seen from tors like Carn Llidi) may represent wave cut platforms from that time. Cenozoic rocks – sandstones, mudstones and lignites – form offshore bedrock in the west of the study area. Uplift led to sea levels higher than today over Pembrokeshire, leading to marine erosion that shaped the present landscape. Offshore bedrock is faulted north east-south west, and north west-south east. The Milford Haven / Daugleddau estuary drainage system formed at this time.

3.9 Quaternary glaciations over the past <450,000 years led to Irish Sea ice crossing into western Britain to various extents. Sea levels in glacial and interglacial periods ranged <50 m lower to <5 m higher than today across Pembrokeshire. A glacial meltwater channel is preserved at Cwm Dewi by Dinas Head, while the raised shingle beach behind Newgale represents interglacial sea level rise.

MARINE AND COASTAL PROCESSES

3.10 Coastal processes today continue the modification of coastal form and seascape character. Processes include wave action, sediment movement on-offshore or

along the shore (longshore drift) and fluvial sediment supply from rivers into estuaries. Wind and wave action cause erosion through abrasion, attrition and hydraulic action and transport and deposit sediment through traction, saltation and suspension. The prevailing south westerlies and movements of tides and currents cause wave and wind erosion particularly on the exposed west facing coasts. The protruding St David's Peninsula and Ramsey and the Marloes Peninsula and Skomer with associated islets are an indication of the harder rocks, still battered by high energy waves. The softer rocks comprising the deep St Bride's Bay coast between continue to erode faster as do the dunes in exposed locations such as Freshwater West. Shores where sedimentation occurs include Carmarthen Bay also accumulating from sediment from the Taf / Twyi estuary. Longshore drift occurs along the southern coast generally from west to east with groynes installed to attempt to control this around Amroth. Currents between islands keep these scoured with the central channel in Ramsey Sound eroded to a great depth.

- 3.11 The sea has a very wide tidal range typically between 4.1m to the north at the Teifi estuary, 5.5m at Ramsey Sound and 6.6m east of Milford Haven. At high water the tidal flow is from east to west along the Bristol Channel and from the north east along St George's Channel. Tidal flows reach their maximum three hours before high water where flows run east-west along the Bristol Channel and sweep north round into St George's Channel and Cardigan Bay. The flow is reversed three hours after high water where flows are strongly in the opposite direction. This causes turbulence in some areas such as around St Anne's Head and at the mouth of the Milford Haven Waterway with a confusing sea and swell. To the west of Skokholm there are fast tidal streams up to 4 knots and tidal races (Wildgoose Race), and eddies off Gateholm. The tide flows through constricted areas such as Jack Sound, between Skomer and the Marloes peninsula, and through Ramsey Sound with up to a 6 knot tidal race with gyres.
- 3.12 Higher waves occur where there is shallower water. This occurs on the coast, around the islands and islets including the Smalls and Gateholm and the Bishops and Clerks and where there are shallow sand bars. Waves tend to be higher on the west facing coasts and lower along Carmarthen Bay and the adjacent sheltered south east facing coast such as at Lydstep and Saundersfoot.



Waves at Broadhaven (South)

MARINE AND COASTAL BIODIVERSITY

- 3.13 There are numerous Special Areas of Conservation (SACs) including West Wales Marine, Pembrokeshire Marine, Bristol Channel Approaches, Cardigan Bay, Carmarthen Bay and Estuaries, Cleddau Rivers and the Limestone Coast of South West Wales. Special Protection Areas (SPAs) include Ramsey and St David's peninsula coast, Skokholm and Skomer and the seas off Pembrokeshire, Grassholm, Castlemartin coast and Carmarthen Bay. There is a Marine Conservation Zone around Skomer. National Nature Reserves lie on Ramsey,

Skomer, Skokholm, Grassholm and Stackpole. Together these designations cover 75% of the coastline and around 60% of the inshore area (see Figure 7).

- 3.14 The maritime habitats include the water column itself and seabed areas of gravel and sand interspersed with submarine cliffs, rocky reefs, stacks and islets.
- 3.15 The water is home to harbour porpoises, bottlenose dolphins, and Atlantic grey seals along with numerous fish species. The seals can be observed resting on isolated beaches or shelving rocks on the more westerly parts of the coast and use the caves and beaches for rearing pups. Harbour porpoises can be seen in places such as Ramsey Sound. Sightings of other species including sharks, orcas, blue whales and turtles are much more rare. All these animals significantly enrich the experience of the seascape and attract many visitors.
- 3.16 The islands and parts of the mainland support a variety of seabirds including puffins, razorbills, shearwaters, fulmars and guillemots on Skomer, gannets on Grassholm, Manx shearwater and peregrine falcon, chough, skylarks and stonechat on coastal habitats. The coastal waters provide overwintering areas for grebe, scoter duck and other diving species. These birds often animate the view from the coast path and boats and again attract many visitors.
- 3.17 The sand and gravel seabed is inhabited by surface and burrowing animals such as crabs. The underwater cliffs and reefs accommodate brown kelp, red seaweed, sponges, sea squirts and anemones amongst other species.
- 3.18 The coastal habitats are littoral rocks and beaches with varying degrees exposure and immersion leading to distinctly different communities of plants and animals such as seaweeds, anemones and molluscs.
- 3.19 The estuarine muds support worms and molluscs on which waders and wildfowl feed. Milford Haven and the Daugleddau estuary have high biodiversity and the former hosts eel-grass beds and saltmarsh and a coastal lagoon lies at Gann, Dale. The area is an important feeding ground for wildfowl and waders such as wintering teal, wigeon, curlew and shelduck as well as redshank, black tailed godwit, bar tailed godwit and turnstone. Otters are found around the Daugleddau. Migratory fish including sewin (sea trout) and salmon are found in many watercourses, for example in the Teifi. Sea bass and dogfish can be found in Milford Haven waterway. Various species of flatfish can be found along the southern coast and rocky shore habitats support a number of fish species, including blennies.



Lagoon at Dale

- 3.20 Exposed coastal habitats of cliff top grasslands and heath support a rich weave of plants including thrift, sea campion, sea plantain, spring squill and red fescue. These bring colour and texture to the rocky cliffs and slopes adding extra pleasure

to coastal walks. On more sheltered slopes bracken is apparent, sometimes providing shade to carpets of bluebells, primroses and red campion.

- 3.21 Woodland and scrub reaches the coast in places with associated species, often in incised valleys with watercourses which have wound inland through the plateau to the coast. These add to the diversity of the coastal habitats.

Cultural influences

HISTORICAL

- 3.22 Pembrokeshire's coastline is long and its harbours are good. It juts out into ancient seaways – not only the busy mouth of the Bristol Channel and the sweep of Cardigan Bay but also into a north-south route that encompasses Ireland and western Britain, one that was known to classical antiquity and to the Norseman.
- 3.23 The seascapes of Pembrokeshire have evolved over millennia. To the east, the paleolandscapes of the Bristol Channel offer the potential for discovery of evidence of our Mesolithic ancestors- sometimes apparent on beaches such as Amroth. After sea level rise at the end of the Ice Age, the intervisibility of shore, hillslope and sea was clearly significant to the people who erected the prehistoric monuments, in which Pembrokeshire is particularly rich. An example is Mynydd Carningli with its commanding views over Newport Bay. The area also has 54 enigmatic rehistoric promontory forts, the densest concentration in Wales, though many of these have nearly been lost to wind and water– Flimston Bay, one of the most spectacular, Great Castle Head at Dale and Porth y Rhaw have all been badly eroded. Conversely, sands may have covered important archaeological sites – a Roman port and an early Christian centre, the predecessor of St David's, may lie under the dunes of Whitesands Bay.
- 3.24 The cathedral and the coastal chapels are eloquent reminders that the sea was the great route of the early Christian church in Wales and Ireland – St David's was only 'remote' from the perspective of London or Canterbury. The monastery on Caldey island perpetuates this tradition.
- 3.25 The sea has also had a powerful impact on strategy and historical events. Milford Haven was the landing-place of Henry Tudor, Henry VII, the *mab darogan* who marched from here to defeat Richard III at Bosworth Field. The landing is obliquely referred to in Shakespeare's court-drama *Cymbeline*, when Imogen, on hearing that her exiled husband may await her at Milford Haven, says:
- ' . . . how far it is
to this same blessed Milford; and, by the way,
Tell me how Wales was made so happy as
To inherit such a haven ...'*
- 3.26 Milford Haven and later Pembroke Dock were the sites of royal navy dockyards from the eighteenth/nineteenth centuries until the late twentieth. There is a particular cluster of defensive sites all around the coast of Pembrokeshire, more marked than in any other area of Wales. From the time of Thomas Cromwell, its overall strategic importance has been recognised – though the French landing at Strumble Head in 1797 was easily repulsed with the French surrendering in the Royal Oak in Fishguard. Naval ship-building was established at Neyland c. 1760 and at Milford Haven in 1796. It was relocated to Pembroke Dock in 1812, which became one of the most important naval ship-building centres in Britain. Facilities were substantially extended in 1830-32 and again in 1844. Such was the area's importance in strategic terms that forts were built to guard the Haven from possible attack by the aggressive government of Napoleon III. Decline set in after the introduction of the Dreadnoughts and the dockyards finally closed in 1926. Civilian dockyards were also established here. During World War II Pembrokeshire played

an important role in the Western Seaboard Defences strategy, when there were twelve airfields in active operation. Remains are still apparent such as the look out on Carn Llidi. Pembroke Dockyard provided a base for military flying boats from 1930 to 1959 and there was a long-standing Army presence in Pembroke Dock with barracks at various locations including West Llanion, Barrack Hill and Pennar Point.



The mouth of Milford Haven

- 3.27 Above all, the coastline has shaped the trade and commerce of the area. Haverfordwest was established at the navigable head of the western Cleddau. Shipyards and creeks were established along the coastline, and the area preserves many fine examples of the small ports that are a feature of the Welsh coast. Lime was quarried from its coastal cliffs, and burnt in kilns by harbours and on the sea-shore. Pembrokeshire also had a long-lived coal industry. Some of its collieries such as Trevane, were situated on the coast. Others lay further inland; those around Saundersfoot only developed when a railway was built to connect them with the harbour, in 1829. The ironworks at Stepside also added to coastal trade. Coastal slate quarries were opened along the north coast, of which the largest was Abereddi, where the pit has been breached by the sea. Slate was exported from Porthgain harbour which later turned to brickmaking using slate waste and then dolerite export. The establishment of a new harbour at Goodwick, capable of handling large ocean going steamers, and subsequent fast rail links established by the Great Western Railway brought investment in Fishguard. The Fishguard Bay Hotel remains as one of the only examples in the region of a major purpose built railway hotel for transatlantic trade. Fishing has been an important regional industry - Milford even boasted a whaling industry at one time. With the introduction of a rail link to wider markets and refrigeration, it expanded to become a major fishing port.
- 3.28 The refineries and oil terminals which began to appear around Milford Haven from 1957 locked the area into a global economy. Other energy-distribution projects have taken their place since, and the sea remains as important to Pembrokeshire as ever.

PRESENT DAY MARINE AND COASTAL ACTIVITIES

- 3.29 Pembrokeshire is established as a popular tourism destination especially around its coast. These tourists are increasingly looking for coastal recreational activities whilst on holiday or coming to the area specifically to participate in such activities. The intensity of use relates to the ease of access with places allowing vehicle access close to, or on, the beach being popular honeypots such as Tenby, Saundersfoot and Amroth to the south east and Newport Bay, Newgale (St. Brides Bay) and Whitesands Bay to the north and west. Other coastal locations are very remote, allowing access only by small boat. Activities can vary from general beach activities which are popular at the many good, clean beaches to the more strenuous activities of kite surfing, climbing, diving and coasteering which was

invented in the area. The intensity of use is also determined by school holidays as well as the weather.



Caravans at Wiseman's Bridge

- 3.30 Coast walking along the Pembrokeshire Coast Path National Trail (part of the Wales Coast Path) and linked paths is very popular. On the basis of information provided by visitor surveys it is estimated that 1 million people use the Coast Path each year. The coast path is 300km long due to the highly indented and complex nature of the coast. Certain stretches are used more intensely than others- mainly those close to the honeypots such as Tenby and Whitesands Bay etc.
- 3.31 Sailing of yachts is popular from locations such as Neyland with its marina in Milford Haven, Tenby and from natural harbours such as Solva and the Teifi Estuary to the north. Motor cruising is also evident from these locations. Other popular marine recreational activities include paddleboarding and kayaking due to the relative ease of access to the water. Other launchable craft that are popular are day motor boats and sailing dinghies out of most beaches with slipways. Sea angling is also popular from both the shore and boats which can go some way offshore.



Coast Path at St Justinians- a popular stretch

- 3.32 Wildlife related recreation trips are popular such as to Skomer Marine Nature Reserve and around Ramsey Island and out to Grassholm for its gannetry. Diving sites are also found in these areas due their biodiversity.
- 3.33 The fishing industry in Pembrokeshire has moved away from historical deep sea trawling with many fishermen now looking to inshore fishing for crustaceans such

as crab and lobster. This results in pots being found around practically any rocky shore.



Potting fishing vessel off Strumble Head

- 3.34 Commercial shipping on the Milford Haven Waterway, primarily of liquefied natural gas (LNG) and oil, along with the ferry terminal at Pembroke Dock, makes this area one of intense activity. This is further intensified with the leisure use. However, the vast extent of the Milford Haven Waterway helps to absorb the intensity of activity.



Milford Haven- refinery

- 3.35 Marine renewable energy is now being explored with pilot and experimental projects of wave and floating wind offshore to the south of Milford Haven and tidal energy in Ramsey Sound. Facilities are being built in Pembroke Dock, replacing old timber docks, to accommodate expansion.

ART AND SEASCAPE

- 3.36 Pembrokeshire's spectacular seascapes have attracted artists in numbers from the 18th century to the present day. Peter Watson, of *Horizon* magazine, a patron of young artists, claimed that west Wales represented the closest approach in Britain to the strong light and elemental landscape of the Mediterranean.
- 3.37 Richard Wilson painted Pembroke town and walls c. 1765-6, and Julius Caesar Ibbetson's *The Guide to the Stackpole Scenery pointing to Stack Rock Pembrokeshire* (oil on canvas and water-colour and black ink, 1793) is one of the most explicitly topographical coastal views of the area from this period.
- 3.38 Augustus John is the artist best known for his Pembrokeshire associations, though he spent most of his life away from Wales. The area's seascapes have inspired many contemporary artists, though an increasing focus on abstraction has meant that fewer are works of recognisable places. John Piper, however, who painted *St*

Bride's Bay, moved away from non-figurative art from when he first started to visit Wales in 1937, and came to be recognised as a landscape painter in the tradition of Turner. Rosemary ('Ray') Howard-Jones also worked in a more representational style, reflecting her background in archaeological reconstruction drawing and as a war artist. *Sunset on Skomer* and *Thunderstorm over Skomer* reflect her visits to the island between 1949 and 1951. Graham Sutherland painted St David's Head and the surrounding area many times.

- 3.39 More recent artists include Brendan Burns who was the first Artist in Residence at Oriol y Parc, Landscape Gallery St Davids, 2009-10, a partnership between the National Park & National Museum Wales. His exhibition 'Influere' was held here. His paintings explore the qualities of the sea and coast with works with evocative names such as 'Seabelt shimmer', 'Squally squint', 'Shoreline ramble' and the 'Tidal' series. The late John Knapp-Fisher established an art gallery in the area and has painted widely. Subjects include Tenby, Porthgain and Solva, as well as pictures such as 'Beach and Sky' which simply shows the juxtaposition of these two elements separated by the sea.
- 3.39 Many coastal locations in Pembrokeshire have been used as film settings, including the filming of Dylan Thomas' 'Under Milk Wood' in Fishguard in 1971. In more recent years, Freshwater West has seen the filming of 'Harry Potter and the Deathly Hallows' and 'Robin Hood'.

Aesthetic and Perceptual Influences

- 3.40. The overriding experience of the Pembrokeshire seascape is open and wild sea meeting diverse and sometimes remote indented coasts of rocky cliffs and shores interspersed with sweeping sandy bays and dunes and intimate little coves and harbours.
- 3.41. The scale of the coast varies significantly between the broad sweep of Carmarthen Bay to the narrow, enclosed harbours of Solva, Abercastle and Stackpole Quay. There are intermediate bays such as Newport Bay and Whitesands Bay with their sandy beaches, enclosed by the strong, distinctive headlands of Dinas Head and St David's Head respectively. These rocky landforms frame views out to open sea to the west. To the south, in good visibility, views are possible to Lundy Island.
- 3.42. The diversity of the seascape is apparent at all scales. At a broad scale adjacent areas can differ significantly. The straight open limestone cliff coast of the remote Castlemartin peninsula contrasts with the indented sandstone and igneous coast of the Dale and Marloes peninsulas with their beaches, and again with the natural industrialised harbour of Milford Haven to the north. At a smaller scale the intricate indented coast between Strumble Head and St David's Head changes quickly between rocky cliffs and shores of varying character with small inaccessible coves and a smattering of coastal settlements and harbours such as Abereiddy and Porthgain. At a detailed level, the variation of habitats from the littoral rocks, to cliffs and cliff top heathland mosaics contrasting with the hinterland of pasture with Pembrokeshire hedgebanks and steep wooded valleys give a variety of form and texture which delights all on the coast path.



Stackpole Head- panoramic views

- 3.43. The sea also varies in character, through variations in weather including wind direction, fetch, tides and depth of water and nature of the seabed. Strong currents meet around headlands such as St Ann's Head and flow through constricted areas such as Jack Sound, between Skomer and the Marloes peninsula, and Ramsey Sound. This disturbed water can be dramatic, such as the standing wave at The Bitches, and is apparent to those on the coast as well as those in boats. Larger waves and 'seahorses' are apparent around the islands and islets such as the Bishops and Clerks and the Smalls as well as on the exposed rocky coasts and west facing beaches such as the dramatic and dangerous Freshwater Bay West with its undertow and the rather safer Whitesands Bay and Newgale Sands, popular with surfers and body boarders. These contrast with the sheltered south and east facing beaches with their relatively calm waters such as at Tenby, Lydstep and Saundersfoot.
- 3.44. A key feature of the Pembrokeshire seascape is the feeling of remoteness, wildness and tranquillity in many parts of the coast. This is particularly apparent on the cliffs on the north coast between Cemaes Head and Newport Bay, the coast south of Strumble Head to around St David's Head, and the Castlemartin peninsula. These locations are mostly accessible via the coast path along the cliff tops although the rocky shores are often inaccessible. Castlemartin has restricted access due to MOD use which also disturbs tranquillity while in use. The islands can be more remote and some are inaccessible, such as Skokholm. Only small numbers access Skomer and Ramsey Island and these feel particularly wild with their low intensity management and semi-natural vegetation. Caldey Island has enforced tranquillity with the monastery and controlled visits. Of course, the most remote areas are offshore where a few in boats, cruising, fishing or diving can feel like they are getting away from it all.
- 3.45. The busiest parts of the coast include Tenby, Saundersfoot and other coastal settlements to the south east and also honeypots such as Whitesands Bay and Broadhaven. These are the parts of the coast which children experience (and probably like) most. The beach is the focus of activity and visitors, young and old, can experience the sand between their toes, the coolness and movement of the water, the sound of waves crashing on the beach, the smell of the salt air and the wind in their hair. These are different experiences from our normal day to day lives and can give a feeling of refreshment and renewal. Evocative holiday experiences can stay with people for the rest of their lives and draw them back to the coast and the sea again and again to 'recharge their batteries'.
- 3.46. The Pembrokeshire coast and islands have a strong sense of place contributed to by both the natural splendour of the indented rocky coastline and islands and the mark of human activity such as peninsula forts e.g. Castell Coch, religious sites e.g. St Govan's Chapel and deserted workings e.g. Porthgain or Abereidly.



St Govan's Chapel

4. Cultural benefits and services

- 4.1. Cultural benefits and services cover the non-material benefits that people obtain from ecosystems such as spiritual and religious enrichment, cultural heritage, recreation and tourism and aesthetic experience. The UK National Ecosystem Assessment, 2011, defines 'Ecosystem cultural services' as '*the environmental settings that give rise to the cultural goods and benefits that people obtain from ecosystems*'. These involve '*a range of complex cultural practices, such as the development of institutions, the application of capital, and human processes involving memories, motions, the senses, and aesthetic appreciation.*' The background to this is discussed further in **Appendix C**.
- 4.2. The Pembrokeshire seascape clearly offers these services in a number of ways. These are set out in **Table 1** as a framework for the brief descriptions for each seascape character area.

Table 1 Ecosystem cultural services provided by the Pembrokeshire seascape

<i>Generic service category</i>	<i>Typical components in Pembrokeshire seascape</i>
Leisure / recreation	<ul style="list-style-type: none"> • walking the Coast Path, rambling, hill walking • sailing, canoeing, rowing, paddleboarding, windsurfing, surfing, kite surfing • swimming, diving, snorkelling, rock-pooling, beach activities • angling, shore-based and from boats • wildlife boat trips • climbing, coasteering • horse riding/beach riding • land yachting • power boating, waterskiing, jet-skiing • parks and play areas
Spiritual / religious	<ul style="list-style-type: none"> • connection with sense of remoteness, tranquillity and timelessness/time depth • connectedness with nature • places of worship, monastery and retreat centres • places with particular sense of identity for local communities
Artistic / cultural heritage	<ul style="list-style-type: none"> • archaeological features such as promontory forts • historic sites and buildings • environmental education activity • festivals and events • food and farming traditions • craft traditions • museums, galleries, and visitor facilities to interpret the environment and cultural heritage
Natural heritage	<ul style="list-style-type: none"> • interactions with or observation of wildlife (for example bird watching, seal watching, dolphin and whale watching) • interaction with the natural coastal and marine environment as a leisure activity • diversity of views, sense of spaciousness, and appreciation of aesthetic qualities

5. Forces for change

- 5.1. Forces for change can be divided into natural processes and climate change, marine/water-based activity, coastal development and marine related activity and land management. A particular focus has been provided in terms of how forces for change affect the special qualities of the National Park. Please note that this guidance does not contain a Sensitivity Assessment.
- 5.2. Natural processes include erosion of coasts, sedimentation and flooding. Though climate change is likely to have significant effects in the long term in relation to sea level rise and changing weather patterns the study focuses mainly on the existing evident and or likely effects over the next ten years. Sea defences can radically change the character of the coast from natural to one dominated by manmade structures. Shoreline Management Plans are in place for the coastline and describe how a stretch of shoreline is likely to be managed to address flooding and / or erosion. Stretches of coast are divided into 'management units' where one of four different management policies are agreed;
 - No active intervention: no planned investment in defending against flooding or erosion, whether or not an artificial defence has existed previously.
 - Hold the (existing defence) line: an aspiration to build or maintain artificial defences so that the position of the shoreline remains. Sometimes, the type or method of defence may change to achieve this result.
 - Managed realignment: allowing the shoreline to move naturally, but managing the process to direct it in certain areas. This is usually done in low-lying areas, but may occasionally apply to cliffs.
 - Advance the line: new defences are built on the seaward side.
- 5.3. The port of Milford is the UK's largest energy port and used by large tankers and other craft including ferries operating out of Pembroke Dock and Fishguard Harbour. The area is very popular for tourism and water-based activity is increasing with sailing and motor leisure boating with marinas and moorings also increasing capacity. There is also an increase in wildlife and boat trips, canoes and other craft. The emergence of potentially higher protection around proposed marine conservation areas such as Skomer may have implications as to recreational use and access.
- 5.4. One of the major tensions in Pembrokeshire is the need to protect wildlife which flourish in the remote coastal waters, islands, cliffs and beaches whilst managing a variety of visitors who increasingly wish to enjoy and access these fragile areas potentially causing damage and disturbance. Offshore there is currently a lease for a demonstration wave energy scheme, early consideration of commercial floating wind energy in the Celtic Sea), landing of marine aggregates from the Bristol Channel at Pembroke Dockyard Wharf, and use for firing ranges and military training. Ramsey Sound has been explored for tidal energy. These activities can have physical effects such as pollution or disturbance of sensitive areas but can also disturb tranquillity and a sense of remoteness.
- 5.5. In terms of offshore renewable energy there are several potential projects (August 2023) to consider. The potential impacts on the Special Qualities of the Pembrokeshire Coast National Park and wider characteristics and qualities of the seascape areas requires careful assessment, particularly with regards to the potential impacts on perceptual and sensory qualities. Natural Resources Wales evidence reports on seascape and visual sensitivity to offshore wind farms will need to be considered as part of the relevant consenting regime. The Natural

Resources Wales reports specifically highlight the high sensitivity of the Pembrokeshire seascape to offshore wind.

- 5.6. The Seascape and Visual Sensitivity to Offshore Wind farms in Wales (Parts 1 to 3)⁷: This strategic assessment and guidance document sets out a desk-based assessment of the sensitivity of the Welsh Seascape for different heights of turbines up to 350m taking into account existing mapped areas such as National Parks and Areas of Outstanding Natural Beauty (AONBs) and seascape character areas. The aim is to avoid significant adverse effects on high sensitivity seascape receptors. The overall study focusses primarily on potential recommended buffers for National Parks and AONBs. (page 12, Part 3) The general conclusions are that the seascape of Wales is highly sensitive in many areas. Detail is provided on sensitivity to offshore wind farm development in different zones (starting page 14, Part 3) with specific reference to issues for Pembrokeshire also commented upon. Detail is also provided in the documentation regarding how the findings are caveated and how they should be treated when considering the visual impact of individual proposals.
- 5.7. In relation to offshore wind, it should be noted that this technology will also require other works which have the potential to impact on seascape character, including the construction of cable routes, landfall and transmission works, and the construction of substations, which collectively have both onshore and offshore implications.
- 5.8. The coast-based infrastructure related to marine commercial activity is likely to continue to change. The Haven has seen the development of refineries, storage facilities, a power station and Liquefied Natural Gas along Milford Haven. Changing requirements for energy will require new facilities to research, assemble, test and service renewable energy schemes such as those being built in Pembroke Dock. Hydrogen technology is also currently being explored in the Haven. The chimneys and structures along the Haven are already widely visible in the Pembrokeshire. Onshore infrastructure for renewable energy installations may affect coastal character.
- 5.9. The Pembrokeshire Coast Path, once a stand-alone attraction, is now part of the Wales Coast Path which itself is very popular. This will potentially increase usage with attendant damage to the path structure through compaction and erosion. Coaststeering and climbing plus beach based activities are putting pressure on the coastal resource with associated infrastructure, disturbance, erosion, compaction and litter. Pressure is also increasing on the access points to the water for recreation.
- 5.10. Whilst the study concentrates on marine-related issues, the view along the coast, and its character, are partly defined by the management of landcover such as farmland. Changes to field boundaries with the removal of hedgebanks / replacement with fences and changes to intensity of management either with abandonment of fields or rough grazing or intensification from unimproved pasture to arable can have significant effects. The attractiveness of the area also leads to pressure for housing and tourist development and associated commercial enterprises. Onshore wind energy can also affect coastal character and may cause cumulative effects with port and oil / gas infrastructure.

⁷ Stage 1 <https://cdn.naturalresources.wales/media/689503/eng-evidence-report-315-seascape-and-visual-sensitivity-to-offshore-wind-farms-in-wales.pdf> Report Number 315

Stage 2 <https://cdn.naturalresources.wales/media/689506/eng-evidence-report-330-seascape-and-visual-sensitivity-to-offshore-wind-farms-in-wales-copy.pdf> Report Number 330

Stage 3 <https://cdn.cyfoethnaturiol.cymru/media/689508/eng-evidence-report-331-seascape-and-visual-sensitivity-to-offshore-wind-farms-in-wales.pdf> Report Number 331

- 5.11. The relevant forces for change are set out with further background explanation in the table in **Appendix D**.

6. Sensitivity of seascape

6.1. The value of the Pembrokeshire seascape was considered to be high in most areas, reflecting the special qualities for which the National Park was designated. The potential susceptibility of the seascape to change was explored and key characteristics and features which may inform consideration of value and susceptibility include:

- Intricate, complex, rugged, indented natural coast with dramatic headlands and islands e.g. St David's Head, Skomer, Ramsey Island, Strumble Head, Stackpole Head.
- Important focal points along the coast and out to sea including islands, islets, headlands and distinctive sweeping beaches such as Whitesands Bay, Freshwater West and Newport Bay.
- Unspoilt hills and backdrops which contribute to seascape character e.g. Carn Llidi and Mynydd Carningli.
- Views from key places such as headlands, coastal hills and the Coast Path.
- Open views to an unspoilt sea horizon reinforcing a sense of escape and space to breathe.
- Open sea and offshore islands and islets with limited, if any, signs of man.
- Small scale, enclosed, views to horizon framed by landform in the many coves and beaches such as Barafundle Bay, Broadhaven, Abereiddi and Newport Bay and also at St Govan's Chapel. Development out to sea within these enclosed views could be particularly disruptive.
- Tranquil seascapes where there is little disturbance and signs of development and dark skies.
- Remote undeveloped seascapes with wild, highly natural, elemental character such as the islands, north coast south west of Strumble Head and the Castlemartin peninsula.
- Secluded and tranquil, well treed character of the Daugleddau estuary with its historic quays.
- Small scale, traditional historic coastal settlements such as Solva, Abercastle, Porthgain and Newport, and harbours such as Porthclais, Lower Town, Fishguard and Stackpole Quay.
- Other coastal conservation areas with dramatic settlement features such as the skyline and harbour of Georgian Tenby.
- Presence of coastal and island historic features such as peninsula forts, castles, chapels e.g. St Govan, monasteries i.e. Caldey Island, other buildings and structures and other heritage features which have a strong relationship with the coast and sea visually, physically and culturally.
- Presence of marine, intertidal and coastal edge habitats with high biodiversity particularly the Skomer Marine Conservation Zone, National Nature Reserves such as Ramsey Island, Special Areas of Conservation covering the majority of the coast and out to sea around the Smalls, Carmarthen Bay SPA and coastal Sites of Special Scientific Interest.

- The connections of the area with St David and Giraldus Cambrensis and other historical figures.
- 6.2. Characteristics and features are set out for each Seascape Character Area informed by the factors influencing susceptibility and value are summarised in **Appendix E**. This also sets out those factors which tend to detract from /susceptibility and value in some areas.

7. List of Summary Figures (see separate document)

FIGURES⁸

Figure 1	Study area
Figure 2	Bathymetry and topography
Figure 3	Geology
Figure 4	Wave climate
Figure 5	Intervisibility of land with sea
Figure 6	Landscape character and regional seascape character units
Figure 7	Biodiversity and Geological designations
Figure 8	Heritage
Figure 9	Fishing
Figure 10	Recreational activity- marine
Figure 11	Recreational activity- coast
Figure 12	Access
Figure 13	Commercial and military activities
Figure 14	Seascape Character Types
Figure 15	Seascape Character Areas

⁸ <https://pcnpa.maps.arcgis.com/apps/instant/portfolio/index.html?appid=b999a064583942a9b79acfa3db49f36c>

8. List of Seascape Character Areas

(see separate document)

The 44 seascape character areas are described in detail in separate documents. The description is divided into physical, cultural and aesthetic and perceptual influences with ecosystem cultural services, key forces for change and sensitivities defined. The seascape character areas are listed as follows:

SCA1	Teifi Estuary
SCA2	Cardigan Island and Cemaes Head
SCA3	Pen y Afr to Pen y Bal
SCA4	Newport Bay
SCA5	Dinas Island
SCA6	Fishguard Bay west Fishguard and Goodwick including Fishguard Harbour and the Quayside at Lower Town.
SCA7	North open sea
SCA8	Newport and Fishguard outer sand bar
SCA9	Crincoed Point and Strumble Head
SCA10	Strumble Head to Penbwhdy
SCA11	Strumble Head deep water
SCA12	Penbwhdy to Penllechwen
SCA13	Western sand and gravel bars
SCA14	St Davids Head
SCA15	Whitesands Bay
SCA16	Ramsey Sound
SCA17	Ramsey Island coastal waters
SCA18	Bishops and Clerks
SCA19	St Brides Bay coastal waters north
SCA20	St Brides Bay coastal waters east
SCA21	St Brides Bay coastal waters south- Borough Head
SCA22	St Brides Bay south coastal waters - The Nab Head
SCA23	St Brides Bay
SCA24	Skomer Island and Marloes Peninsula
SCA25	Skokholm and Gateholm coastal waters
SCA26	Grassholm and the Smalls
SCA27	West open sea
SCA28	Southern inshore waters
SCA29	Southern offshore waters
SCA30	Outer Milford Haven
SCA31	Inner Milford Haven
SCA32	Daugleddau
SCA33	Freshwater West
SCA34	Castlemartin coastal waters
SCA35	Stackpole coastal waters
SCA36	Freshwater East and Manorbier
SCA37	Lydstep Haven coastal waters
SCA38	Tenby and Caldey Island
SCA39	Carmarthen Bay west

- SCA41 Carmarthen Bay north - Pembrey
- SCA42 Carmarthen Bay
- SCA43 Bristol Channel offshore
- SCA44 Western offshore - very deep water